

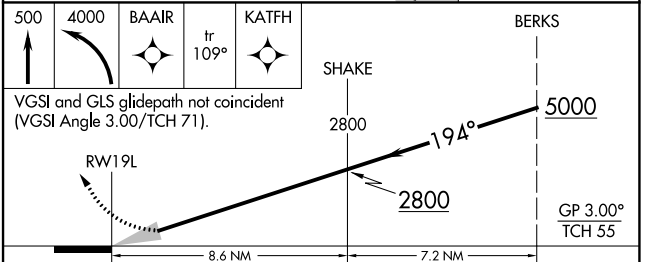
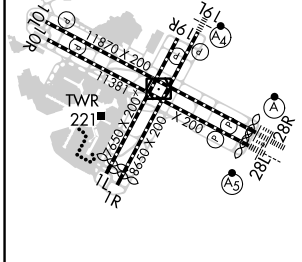
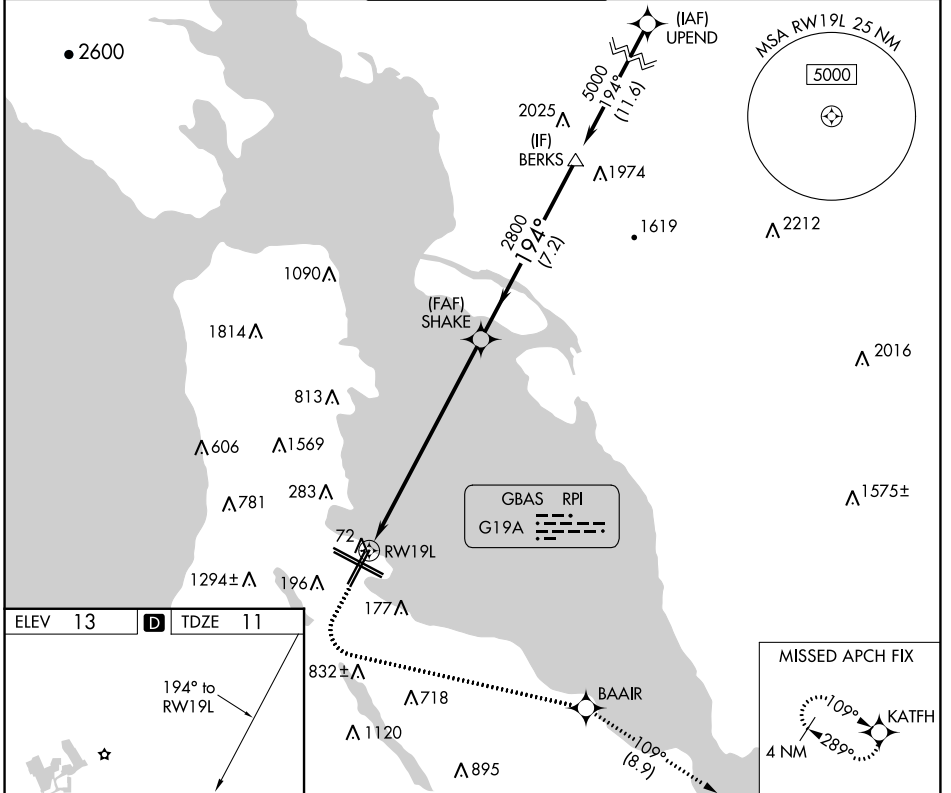
GBAS CH 21448 G19A	APP CRS 194°	Rwy Idg TDZE Apt Elev	8650 11 13
--	------------------------	-----------------------------	---------------------------------------

GLS RWY 19L

SAN FRANCISCO INTL (SFO)

RNP APCH-GPS.		MALSF 	MISSED APPROACH: Climb to 500 then climbing left turn to 4000 direct BAAIR and 109° track to KATFH and hold.
Simultaneous approach authorized. Simultaneous operations require use of vertical guidance; maintain last assigned altitude until established on glidepath. Use of FD or AP required during simultaneous operations. Autopilot coupled approach NA below 293 feet. For inop ALS, increase GLS visibility to RVR 4500.			

D-ATIS 113.7 115.8 118.85	NORCAL APP CON 134.5 338.2	SAN FRANCISCO TOWER 120.5 269.1	GND CON 121.8	CLNC DEL 118.2	CPDLC
-------------------------------------	--------------------------------------	---	-------------------------	--------------------------	-------



TDZ/CL Rwy 19L and 28R REIL Rwy 1L, 1R and 10L HIRL all Rwy	ELEV 13	D	TDZE 11	
CATEGORY	A	B	C	D
GLS DA	293/40		282 (300-3/4)	

SW-2, 07 SEP 2023 to 05 OCT 2023

SW-2, 07 SEP 2023 to 05 OCT 2023