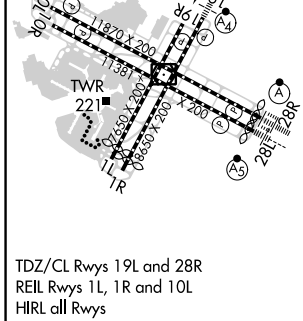
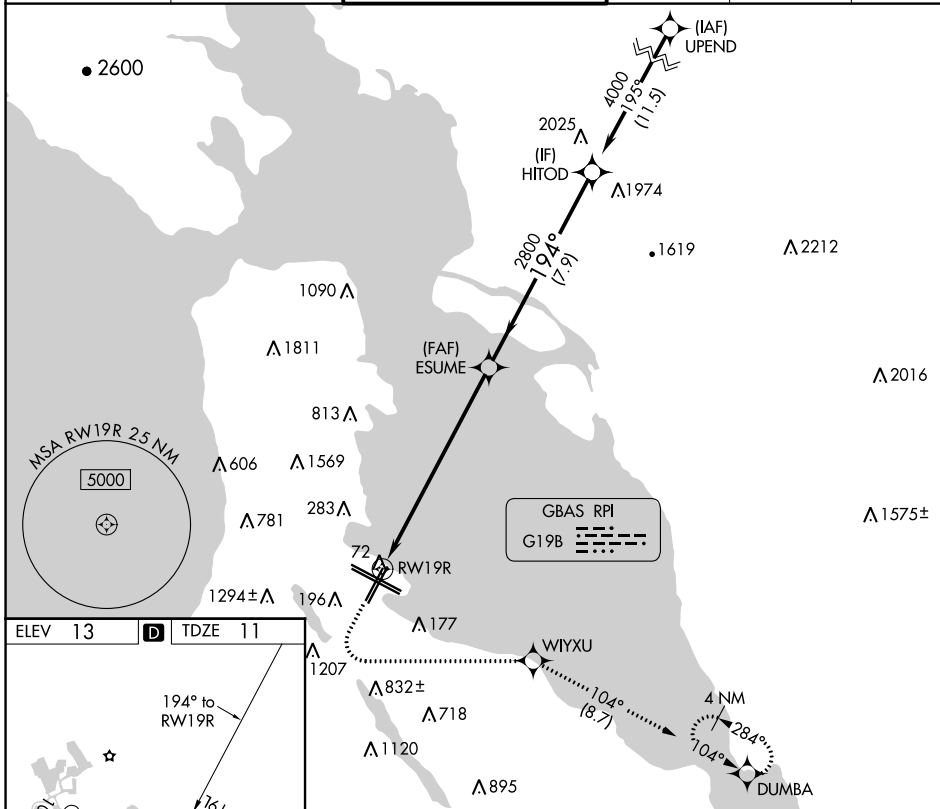


GBAS CH 21859 G19B	APP CRS 194°	Rwy Idg TDZE Apt Elev	7650 11 13
--	------------------------	-----------------------------	---------------------------------------

GLS RWY 19R

SAN FRANCISCO INTL (SFO)

RNP APCH-GPS.		MISSED APPROACH: (Do not exceed 220K until WIYXU) Climb to 600 then climbing left turn to 3000 direct WIYXU and track 104° to DUMBA and hold.					
⚠ NA Simultaneous approach authorized. Simultaneous operations require use of vertical guidance; maintain last assigned altitude until established on glidepath. Use of FD or AP required during simultaneous operations. Autopilot coupled approach NA below 321 feet.		D-ATIS 113.7 115.8 118.85	NORCAL APP CON 134.5 338.2	SAN FRANCISCO TOWER 120.5 269.1	GND CON 121.8	CLNC DEL 118.2	CPDLC



ELEV 13	TDZE 11	600		3000	WIYXU	tr 104°	DUMBA	HITOD	
TDZ/CL Rwy 19L and 28R REIL Rwy 1L, 1R and 10L HIRL all Rwy		RWY 19R 8.2 NM		ESUME 2800		194° 4000		GP 3.15° TCH 55	
CATEGORY		A	B	C	D				
GLS DA		321/45		310 (400-7%)					

SW-2, 07 SEP 2023 to 05 OCT 2023

SW-2, 07 SEP 2023 to 05 OCT 2023