

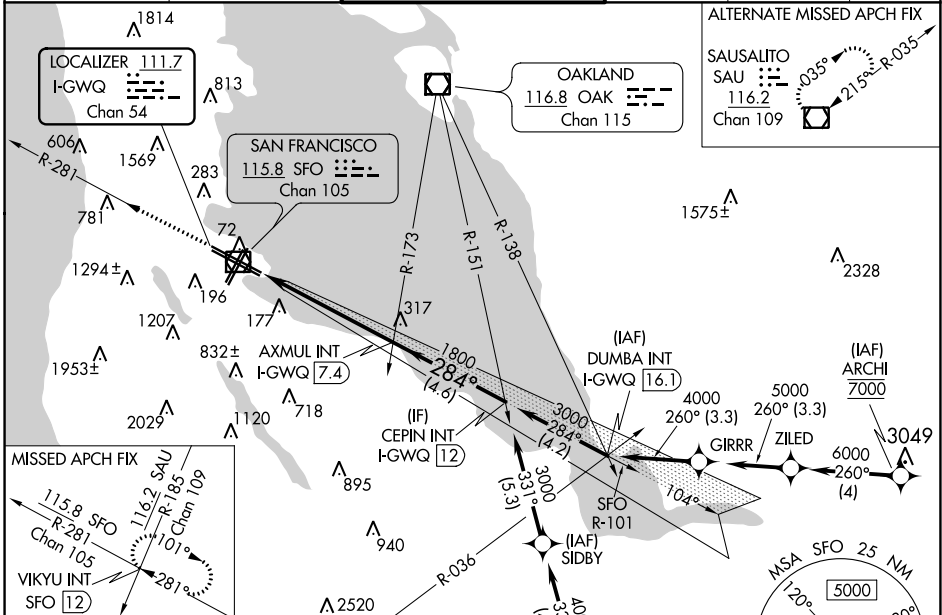
LOC/DME I-GWQ <b>111.7</b> Chan 54	APP CRS <b>284°</b>	Rwy Idg <b>11236</b> TDZE <b>13</b> Apt Elev <b>13</b>
--	------------------------	--

# ILS RWY 28R (CAT II & III)

SAN FRANCISCO INTL (SFO)

RNAV 1-GPS or RADAR required for procedure entry.		ALSIF-2	MISSED APPROACH: Climb to 3000 on SFO VOR/DME R-281 to VIKYU INT/SFO 12 DME and hold. *Missed approach requires minimum climb of 350 feet per NM to 1900; if unable to meet climb gradient, see ILS or LOC RWY 28L.		
---	--	---------	--	--	--

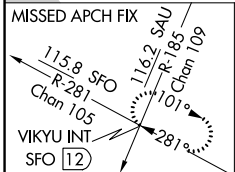
D-ATIS <b>113.7 115.8</b> <b>118.85</b>	NORCAL APP CON <b>134.5 338.2</b>	SAN FRANCISCO TOWER <b>120.5 269.1</b>	GND CON <b>121.8</b>	CLNC DEL <b>118.2</b>	CPDLC
---	--------------------------------------	---	-------------------------	--------------------------	-------



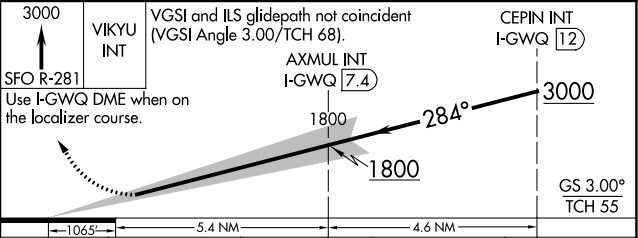
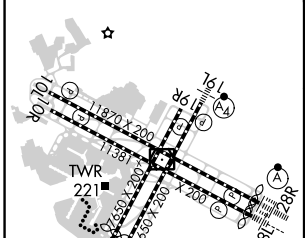
ALTERNATE MISSED APCH FIX	
SAUSALITO SAU 116.2 Chan 109	OAKLAND 116.8 OAK Chan 115

SW-2, 07 SEP 2023 to 05 OCT 2023

SW-2, 07 SEP 2023 to 05 OCT 2023



ELEV 13	D	TDZE 13
HIRL all Rwys		
TDZ/CL Rwys 19L and 28R		
REIL Rwys 1L, 1R and 10L		



CATEGORY	A	B	C	D
S-ILS 28R*	CAT II RA 113/12 100 DA 113			
S-ILS 28R*	CAT III RVR 06			

## CATEGORY II & III ILS - SPECIAL AIRCREW & AIRCRAFT CERTIFICATION REQUIRED