

LOC/DME I-SIA 108.9 Chan 26	APP CRS 194°	Rwy Idg TDZE Apt Elev	19L 8650 11 13	19R 7650 11 13
--	------------------------	-----------------------------	--	--

ILS or LOC RWY 19L

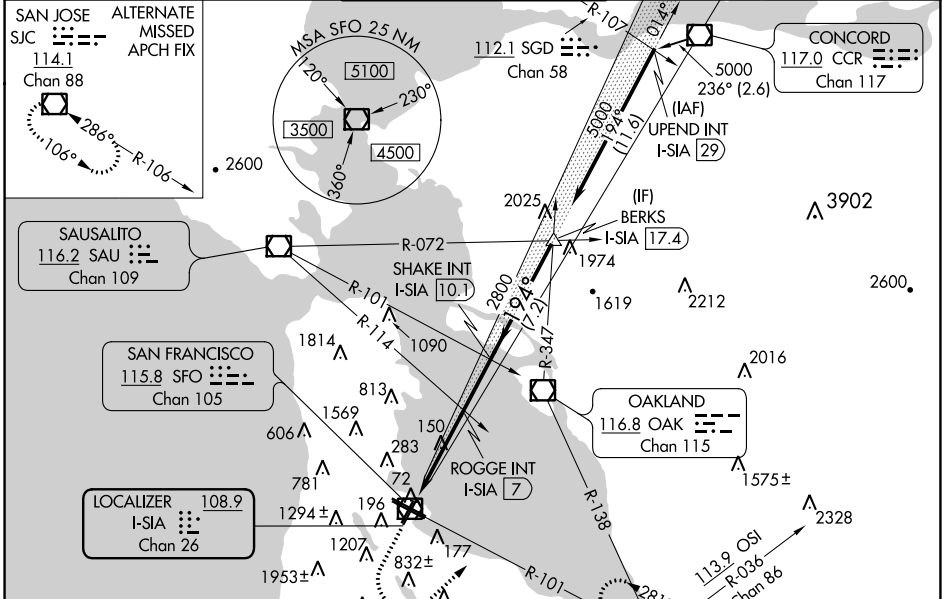
SAN FRANCISCO INTL (SFO)

⚠ Simultaneous approach authorized. Simultaneous operations require use of vertical guidance; maintain last assigned altitude until established on the glideslope. Sidestep NA until passing ROGGE INT. For inop ALS, increase S-ILS 19L all Cats visibility to RVR 4500. Inop table does not apply to Sidestep 19R or S-LOC 19L Cats C/D.

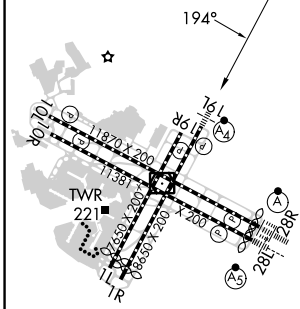
MALSF
Rwy 19L

MISSED APPROACH: Climb to 520 then climbing left turn to 4000 on SFO VOR/DME R-101 to DUMBA INT/SFO 15 DME and hold.

D-ATIS 113.7 115.8 118.85	NORCAL APP CON 134.5 338.2	SAN FRANCISCO TOWER 120.5 269.1	GND CON 121.8	CLNC DEL 118.2	CPDLC
---	--------------------------------------	---	-------------------------	--------------------------	-------



ELEV 13	D	TDZE 19L 11	TDZE 19R 11
---------	----------	-------------	-------------



520	4000	DUMBA INT	VGSI and ILS glidepath not coincident (VGSI Angle 3.00/TCH 71).	BERKS INT I-SIA 17.4
SFO R-101				
*LOC only				
I-SIA 1.5	*I-SIA 2.5	ROGGE INT I-SIA 7	SHAKE INT I-SIA 10.1	5000
				GS 3.00° TCH 55
	1 NM	4.5 NM	3.1 NM	7.2 NM

CATEGORY	A	B	C	D
S-ILS 19L	300/40		289 (300-¾)	
S-LOC 19L	1800/55	1800-1¼	1800-3 1789 (1800-3)	
	1789 (1800-1)		1789 (1800-1¼)	
ROGGE FIX MINIMUMS (DUAL VOR RECEIVERS OR DME REQUIRED)				
S-LOC 19L	400/40	389 (400-¾)		400/45 389 (400-¾)
SIDESTEP 19R	400/55 389 (400-1)		400-1½	400-2
			389 (400-1½)	

HIRL all Rwys
TDZ/CL Rwys 19L and 28R
REL Rwys 1L, 1R and 10L

FAF to MAP 8.6 NM

Knots	60	90	120	150	180
Min:Sec	8:36	5:44	4:18	3:26	2:52

SW-2, 07 SEP 2023 to 05 OCT 2023

SW-2, 07 SEP 2023 to 05 OCT 2023