

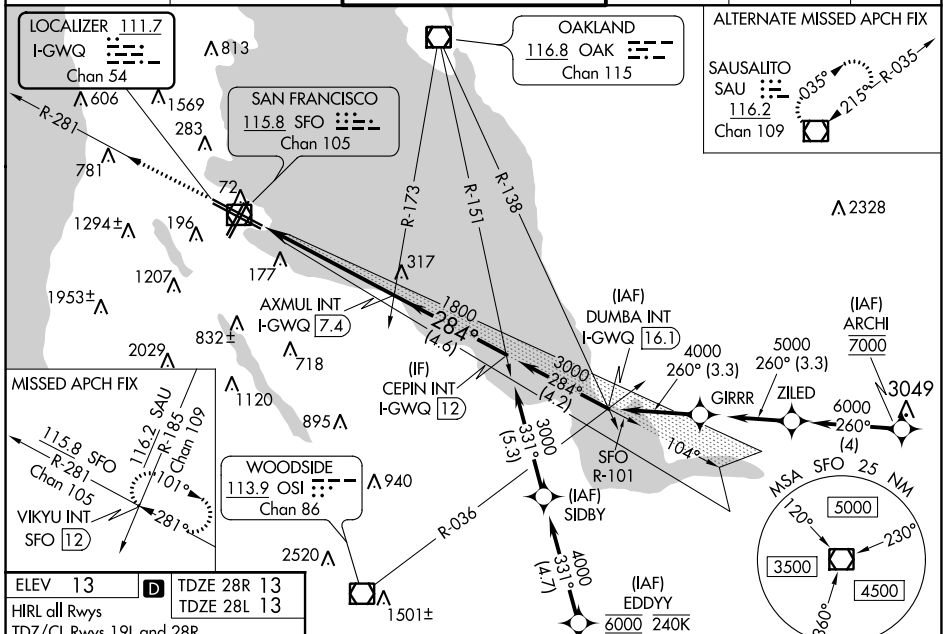
LOC/DME I-GWQ <b>111.7</b> Chan 54	APP CRS <b>284°</b>	Rwy Idg 28R 28L	11236 10275
		TDZE 13 13	
		Apt Elev 13 13	

# ILS or LOC RWY 28R

SAN FRANCISCO INTL (SFO)

<p>RNAV 1-GPS or RADAR required for procedure entry.</p> <p><b>⚠</b> Circling NA to Rwys 10L, 10R, 19L, and 19R. Circling Rwy 1L, 1R NA at night. LOC procedure NA during simultaneous operations. For inop ALS increase S-LOC 28R* Cat C/D visibility to 1 3/8 SM. Simultaneous approach authorized. Simultaneous operations require use of vertical guidance; maintain last assigned altitude until established on glideslope.</p>	<p>ALSIF-2 Rwy 28R</p>	<p>MALSR Rwy 28L</p>	<p>MISSED APPROACH: Climb to 3000 on SFO VOR/DME R-281 to VIKYU INT/SFO 12 DME and hold. *Missed approach requires minimum climb of 350 feet per NM to 1900; if unable to meet climb gradient, see ILS or LOC RWY 28L.</p>
--	------------------------	----------------------	--

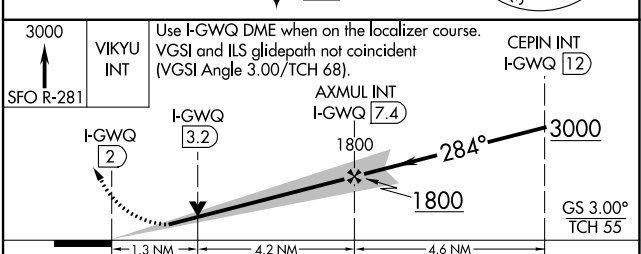
D-ATIS <b>113.7 115.8 118.85</b>	NORCAL APP CON <b>134.5 338.2</b>	SAN FRANCISCO TOWER <b>120.5 269.1</b>	GND CON <b>121.8</b>	CLNC DEL <b>118.2</b>	CPDLC
-------------------------------------	--------------------------------------	---	-------------------------	--------------------------	-------



ELEV 13	TDZE 28R 13
HIRL all Rwys	TDZE 28L 13
TDZ/CL Rwys 19L and 28R	
REIL Rwys 1L, 1R and 10L	

FAF to MAP 5.4 NM
Knots: 60, 90, 120, 150, 180
Min.Sec: 5:24, 3:36, 2:42, 2:10, 1:48



CATEGORY	A	B	C	D
S-ILS 28R*	213/18 200 (200-1/2)			
S-LOC 28R*	480/24	467 (500-1/2)	480/50	467 (500-1)
SIDESTEP* 28L	480/55 467 (500-1)			480-1 1/2 467 (500-1 1/2)
<b>ⓐ</b> CIRCLING	740-1 727 (800-1)	960-1 1/4 947 (1000-1 1/4)	1560-3 1547 (1600-3)	NA

SW-2, 07 SEP 2023 to 05 OCT 2023

SW-2, 07 SEP 2023 to 05 OCT 2023