

APP CRS	Rwy Idg	11193
104°	TDZE	7
	Apt Elev	13

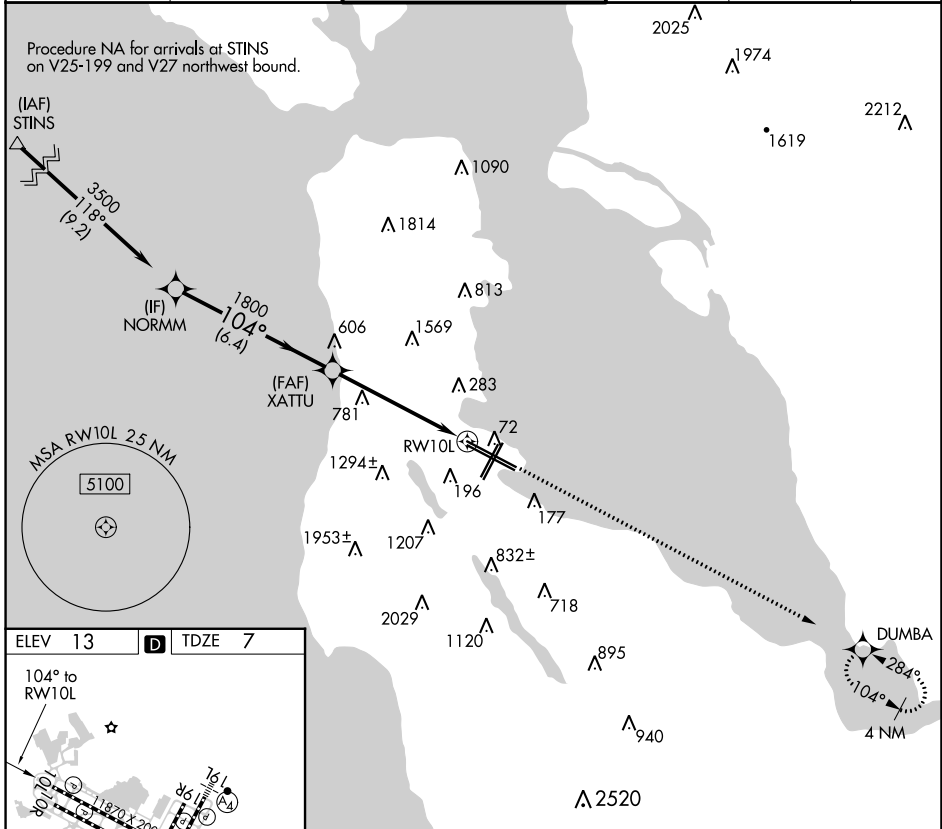
RNAV (GPS) RWY 10L

SAN FRANCISCO INTL (SFO)

▽ DME/DME RNP-0.3 NA.
▲ Helicopter visibility reduction below RVR 4000 NA.

MISSED APPROACH: Climb to 4000 direct DUMBA and hold.

D-ATIS 113.7 115.8 118.85	NORCAL APP CON 134.5 338.2	SAN FRANCISCO TOWER 120.5 269.1	GND CON 121.8	CLNC DEL 118.2	CPDLC
-----------------------------------------------	--------------------------------------	-------------------------------------------	-------------------------	--------------------------	-------



ELEV 13 **D** TDZE 7

104° to RWY 10L

3500

104°

1800

3.00°

TCH 55'

3.5 NM to RWY 10L

4000

DUMBA

6.4 NM

2 NM

3.5 NM

TDZ/CL Rws 19L and 28R
 REIL Rws 1L, 1R, and 10L
 HIRL all Rws

VGSI and descent angles not coincident (VGSI Angle 3.00/TCH 80).

CATEGORY	A	B	C	D
LNAV MDA	1200/60 1193 (1200-1¼)	1200-1½ 1193 (1200-1½)	1200-3	1193 (1200-3)

SW-2, 07 SEP 2023 to 05 OCT 2023

SW-2, 07 SEP 2023 to 05 OCT 2023