

|             |          |              |
|-------------|----------|--------------|
| APP CRS     | Rwy Idg  | <b>11236</b> |
| <b>281°</b> | TDZE     | <b>13</b>    |
|             | Apt Elev | <b>13</b>    |

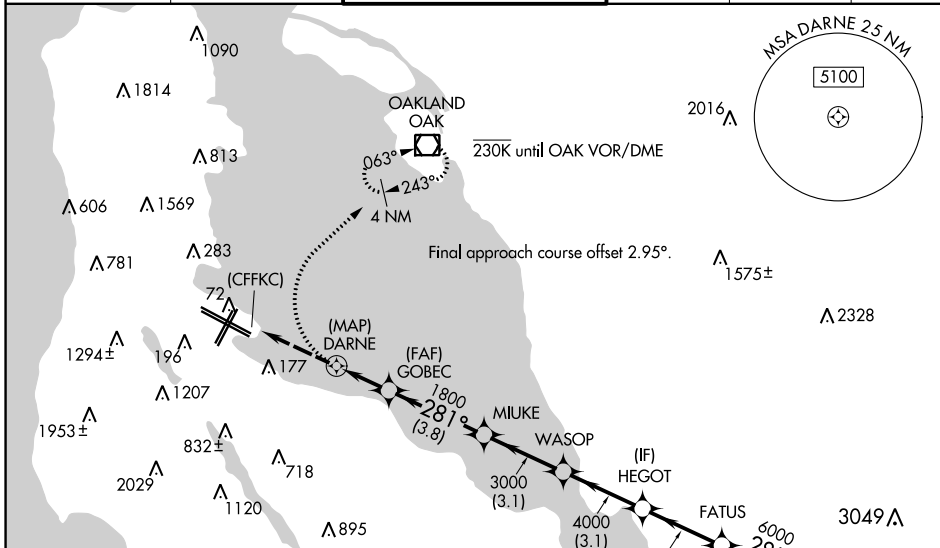
# RNAV (GPS) X RWY 28R

SAN FRANCISCO INTL (SFO)

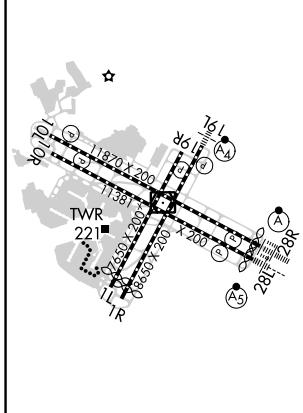
**NA** Runway 28L and 28R separated by 750 feet centerline to centerline. DME/DME RNP-0.3 NA. When executing a missed approach or go-around, unless otherwise instructed by ATC, initially turn right to 030° utilizing heading mode. Inoperative table does not apply. For uncompensated Baro-VNAV systems, LNAV/VNAV NA below 2°C (36°F) or above 54°C (130°F).  
 \*If a go-around executed after passing DARNE, go-around requires a minimum climb of 380 feet per NM to 1800.

**ALSF-2** MISSED APPROACH: Climbing right turn to 3000 on heading 030° then direct OAK VOR/DME and hold.

|                                     |                                      |   |                         |                          |       |
|-------------------------------------|--------------------------------------|---|-------------------------|--------------------------|-------|
| D-ATIS<br><b>113.7 115.8 118.85</b> | NORCAL APP CON<br><b>134.5 338.2</b> | SAN FRANCISCO TOWER<br><b>120.5 269.1</b> | GND CON<br><b>121.8</b> | CLNC DEL<br><b>118.2</b> | CPDLC |
|-------------------------------------|--------------------------------------|---|-------------------------|--------------------------|-------|



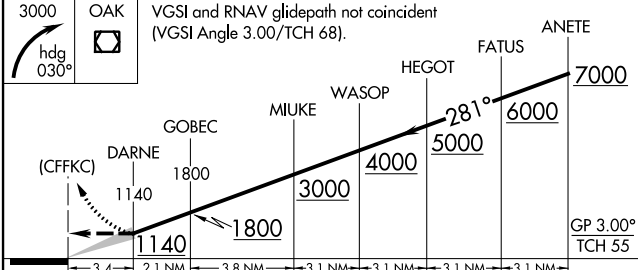
|         |          |         |
|---------|----------|---------|
| ELEV 13 | <b>D</b> | TDZE 13 |
|---------|----------|---------|



TDZ/CL Rwy 19L and 28R  
 REIL Rwy 1L, 1R, and 10L  
 HIRL all Rwy

**RADAR REQUIRED**

3000 OAK VGS and RNAV glidepath not coincident (VGS Angle 3.00/TCH 68).



|               |        |      |         |   |
|---------------|--------|------|---------|---|
| CATEGORY      | A      | B    | C       | D |
| LNAV/VNAV DA* | 1140-4 | 1127 | 11200-4 |   |