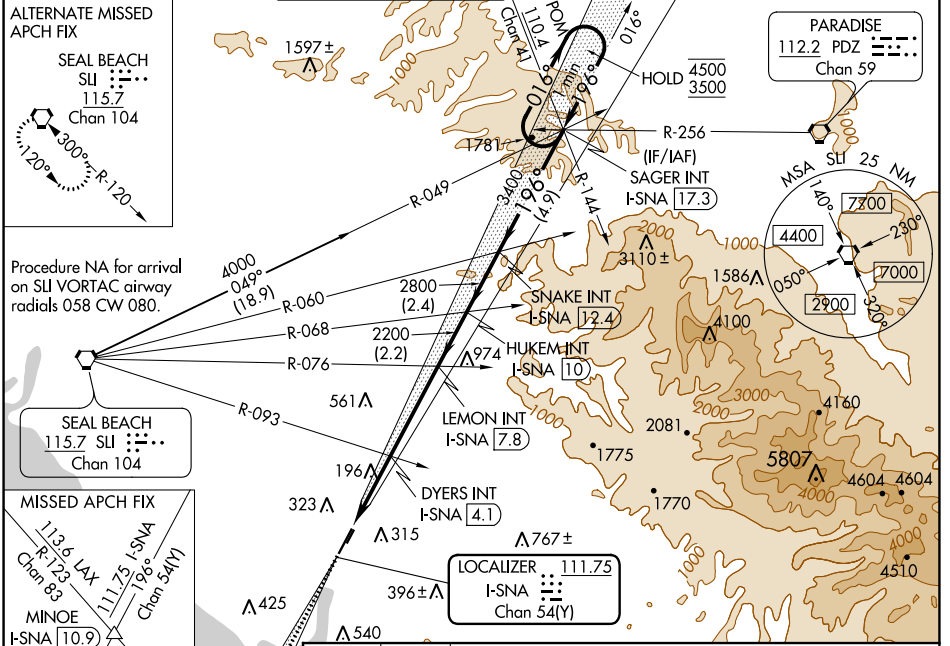


LOC/DME I-SNA <b>111.75</b> Chan 54(Y)	APP CRS <b>196°</b>	Rwy Idg TDZE Apt Elev	<b>5700</b> <b>54</b> <b>56</b>
--	------------------------	-----------------------------	---------------------------------------

# ILS or LOC RWY 20R

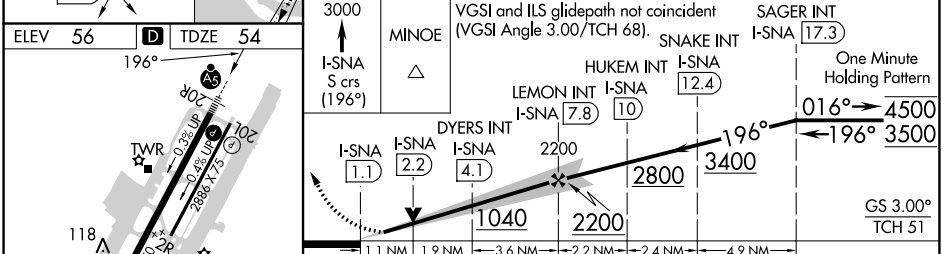
JOHN WAYNE/ORANGE COUNTY (SNA)

<p><b>⚠</b> Circling Rwy 20L NA at night. For inop ALS, increase DYERS fix minimums S-LOC 20R Cat C and D visibility to RVR 6000. *RVR 1800 authorized with the use of FD or AP or HUD to DA.</p>		<p>MALSR </p>	<p>MISSED APPROACH: Climb to 3000 on I-SNA LOC south course (196°) to MINOE INT/I-SNA 10.9 DME.</p>			
D-ATIS <b>126.0</b>	SOCAL APP CON <b>121.3 263.1</b>	<p><b>JOHN WAYNE TOWER *</b> <b>126.8</b> (CTAF) <b>0 343.625</b></p>	GND CON <b>120.8</b>	CLNC DEL <b>118.0</b>	CPDLC	UNICOM <b>122.95</b>



SW-3, 07 SEP 2023 to 05 OCT 2023

SW-3, 07 SEP 2023 to 05 OCT 2023



CATEGORY	A	B	C	D
S-ILS 20R*	255/24 201 (200-½)			
S-LOC 20R	1040/40 986 (1000-¾)	1040/55 986 (1000-1)	1040-2½	986 (1000-2½)
<b>C</b> CIRCLING	1040-1¼ 984 (1000-1¼)	1040-1½ 984 (1000-½)	1040-3 984 (1000-3)	1160-3 1104 (1200-3)
DYERS FIX MINIMUMS (DUAL VOR RECEIVERS OR DME REQUIRED)				
S-LOC 20R	460/24	406 (500-½)	460/40	406 (500-¾)
<b>C</b> CIRCLING	640-1	584 (600-1)	840-2¼ 784 (800-2¼)	1160-3 1104 (1200-3)

FAF to MAP 6.6 NM

Knots	60	90	120	150	180
Min:Sec	6:36	4:24	3:18	2:38	2:12