

D-ATIS 126.0
CLNC DEL 118.0
CPDLC
GND CON 120.8
SOCAL DEF CON 133.85 346.35

TOP ALTITUDE:
14000

SW-3, 07 SEP 2023 to 05 OCT 2023

DEPARTURE ROUTE DESCRIPTION

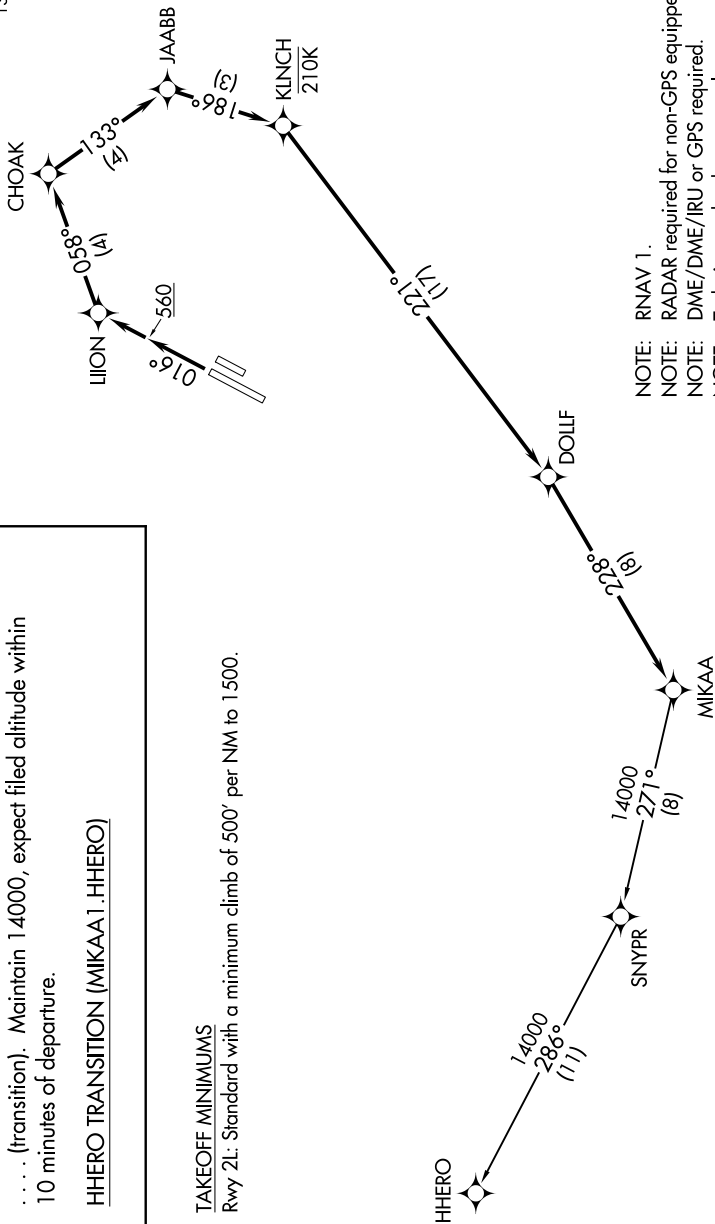
TAKEOFF RUNWAY 2L: Climb heading 016°, then direct LIJON, then on track 058° to CHOAK, then on depicted route to MIKAA thence. . . .

. . . . (transition). Maintain 14000, expect filed altitude within 10 minutes of departure.

HHERO TRANSITION (MIKAA1.HHERO)

TAKEOFF MINIMUMS

Rwy 2L: Standard with a minimum climb of 500' per NM to 1500.



- NOTE: RNAV 1.
- NOTE: RADAR required for non-GPS equipped aircraft.
- NOTE: DME/DME/IRU or GPS required.
- NOTE: Turbojets and turboprops only.

NOTE: Chart not to scale.

SW-3, 07 SEP 2023 to 05 OCT 2023