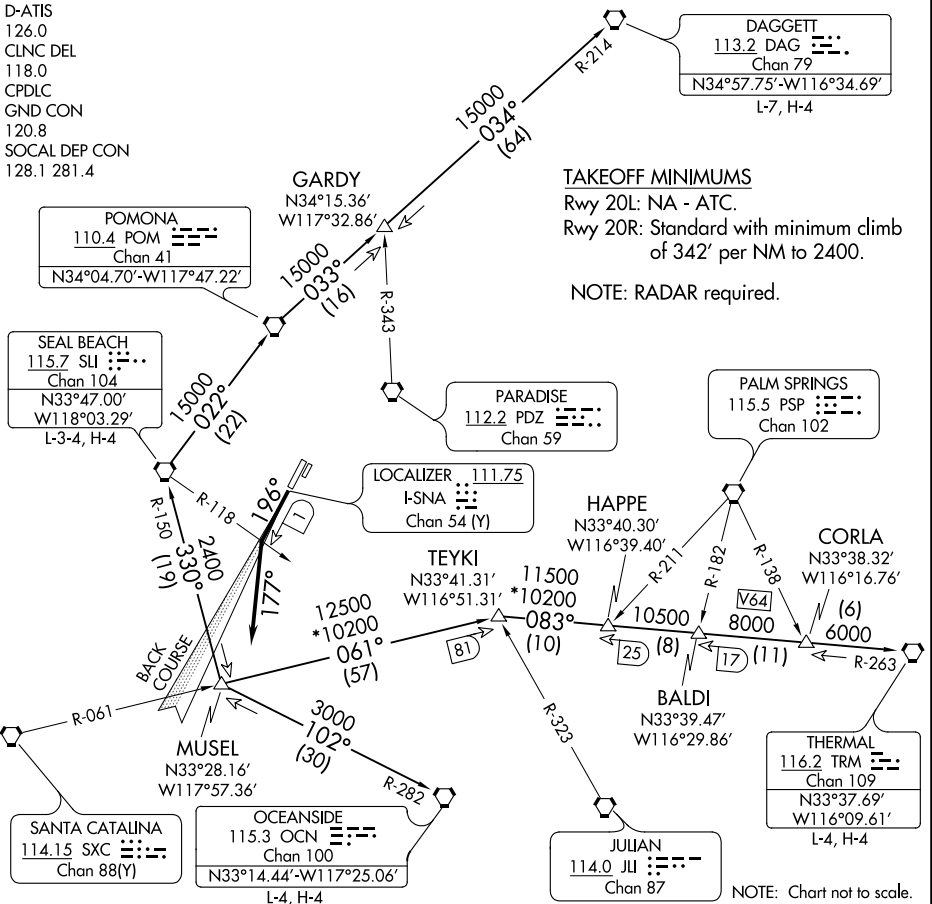


MUSEL EIGHT DEPARTURE

D-ATIS
126.0
CLNC DEL
118.0
CPDLC
GND CON
120.8
SOCAL DEP CON
128.1 281.4



TAKEOFF MINIMUMS

Rwy 20L: NA - ATC.
Rwy 20R: Standard with minimum climb of 342' per NM to 2400.

NOTE: RADAR required.

SW-3, 07 SEP 2023 to 05 OCT 2023

SW-3, 07 SEP 2023 to 05 OCT 2023

DEPARTURE ROUTE DESCRIPTION

TAKEOFF RUNWAY 20R: Climb heading 196° or I-SNA localizer south course to I-SNA 1 DME fix or SLI R-118, turn left heading 177° for vectors to MUSEL INT. Thence

. . . . on (transition) or (assigned route). Expect filed altitude ten minutes after departure.

DAGGETT TRANSITION (MUSEL8.DAG): From over MUSEL INT on SLI R-150 to SLI VORTAC, then on SLI R-022 to POM VORTAC, then on POM R-033 to GARDY INT and on DAG R-214 to DAG VORTAC.

OCEANSIDE TRANSITION (MUSEL8.OCN): From over MUSEL INT on OCN R-282 to OCN VORTAC.

SEAL BEACH TRANSITION (MUSEL8.SLI): From over MUSEL INT on SLI R-150 to SLI VORTAC.

THERMAL TRANSITION (MUSEL8.TRM): From over MUSEL INT on SXC R-061 to TEYKI INT and TRM R-263 to TRM VORTAC.