

PIGGN THREE DEPARTURE (RNAV)

SW-3, 07 SEP 2023 to 05 OCT 2023

NOTE: RADAR required.

NOTE: RNAV-1.

NOTE: DME/DME/IRU or GPS required.

NOTE: Turboprop and turboprop only.

NOTE: Parachute jumping all hours, 14000' and below, north of route between PIGGN and FNCHH.

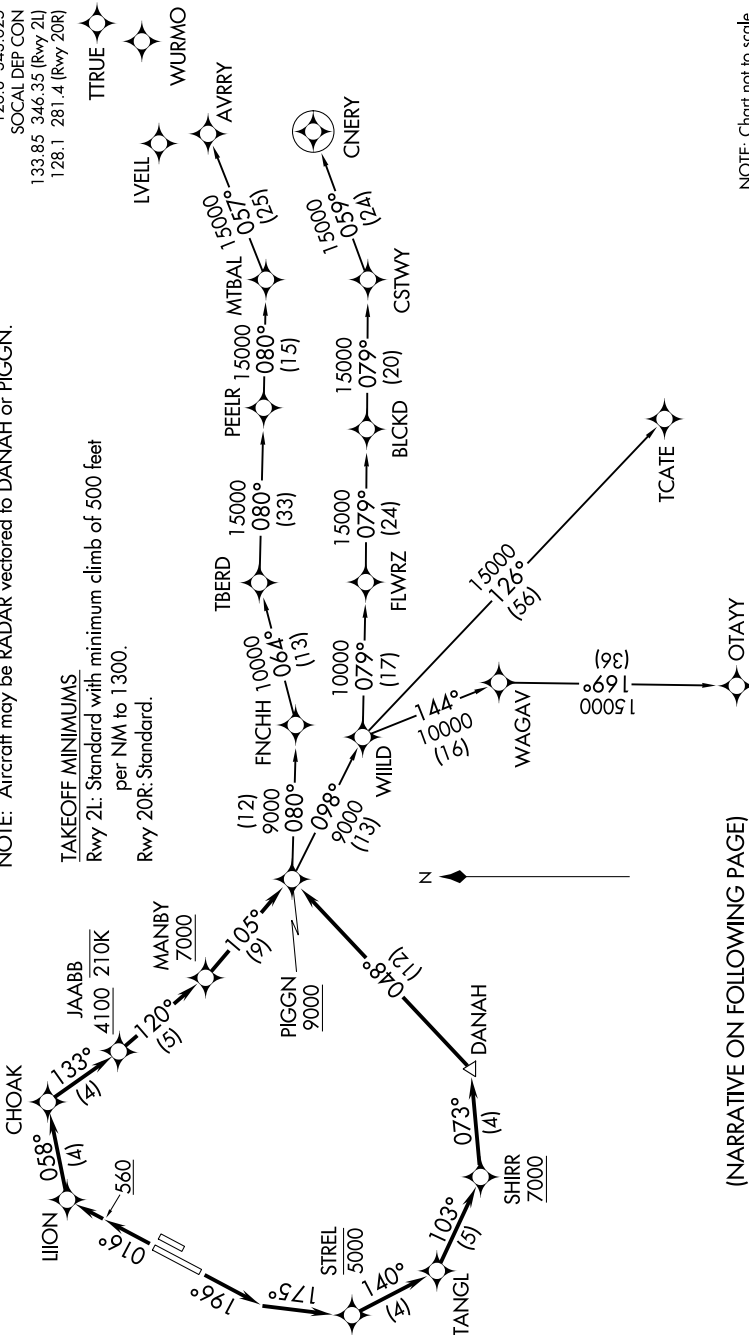
NOTE: Aircraft may be RADAR vectored to DANAH or PIGGN.

TAKEOFF MINIMUMS

Rwy 2L: Standard with minimum climb of 500 feet per NM to 1300.

Rwy 20R: Standard.

TOP ALTITUDE:
13000



(NARRATIVE ON FOLLOWING PAGE)

NOTE: Chart not to scale.

SW-3, 07 SEP 2023 to 05 OCT 2023