

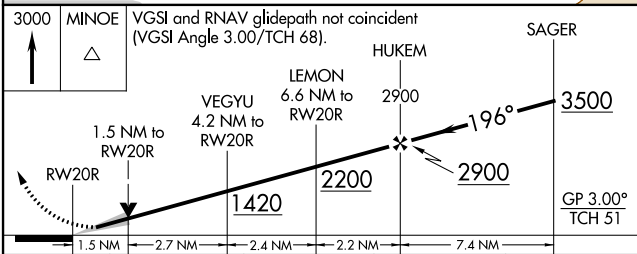
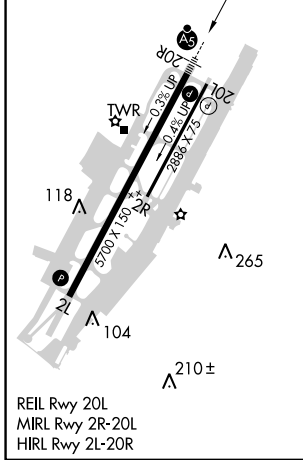
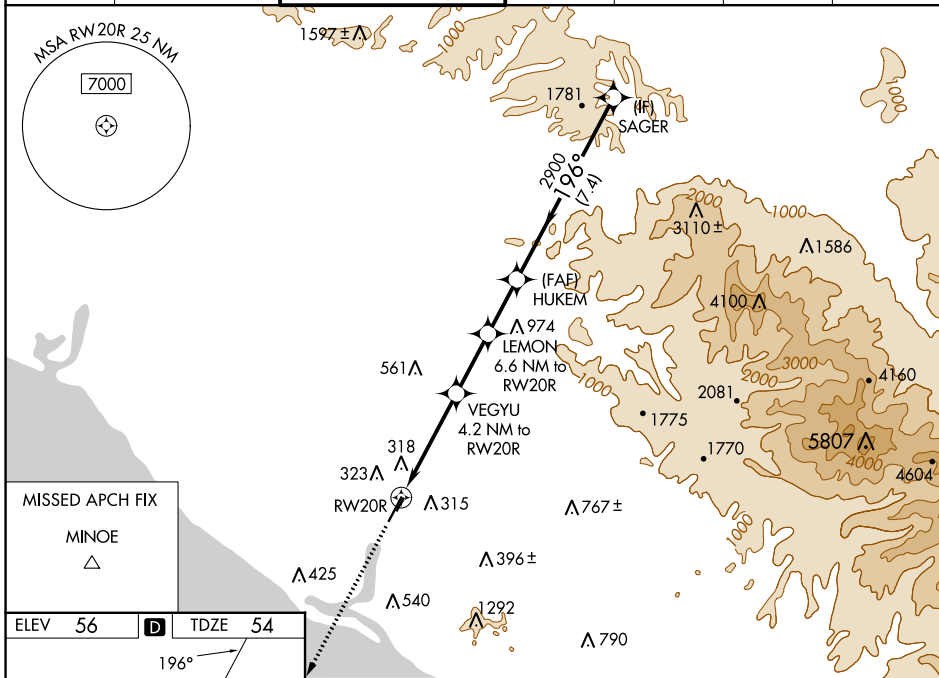
WAAS CH 99502 W20A	APP CRS 196°	Rwy Idg TDZE Apt Elev	5700 54 56
--	------------------------	-----------------------------	---------------------------------------

RNAV (GPS) Y RWY 20R

JOHN WAYNE/ORANGE COUNTY (SNA)

RNP APCH - GPS. RADAR required.		MALSR 	MISSED APPROACH: Climb to 3000 direct MINOE.
<p>⚠ Circling Rwy 20L NA at night. For uncompensated Baro-VNAV systems, LNAV/VNAV NA below 5°C or above 54°C. For inop ALS increase LNAV/VNAV visibility to 1 3/8 SM. *RVR 1800 authorized with use of FD or AP or HUD to DA.</p>			

D-ATIS 126.0	SOCAL APP CON 121.3 263.1	JOHN WAYNE TOWER ★ 126.8 (CTAF) 0 343.625	GND CON 120.8	CLNC DEL 118.0	CPDLC	UNICOM 122.95
------------------------	-------------------------------------	---	-------------------------	--------------------------	-------	-------------------------



CATEGORY	A	B	C	D
LPV DA*	255/24		201 (200-1/2)	
LNAV/VNAV DA	516/50		462 (500-1)	
LNAV MDA	580/24	526 (600-1/2)	580/55	526 (600-1)
C CIRCLING	640-1	584 (600-1)	840-2 1/4 784 (800-2 1/4)	1160-3 1104 (1200-3)

SW-3, 07 SEP 2023 to 05 OCT 2023

SW-3, 07 SEP 2023 to 05 OCT 2023