



LOC/DME I-RMT 110.35 Chan 40 (Y)	APP CRS 126°	Rwy Idg 8279 TDZE 3963 Apt Elev 3967
---	------------------------	---

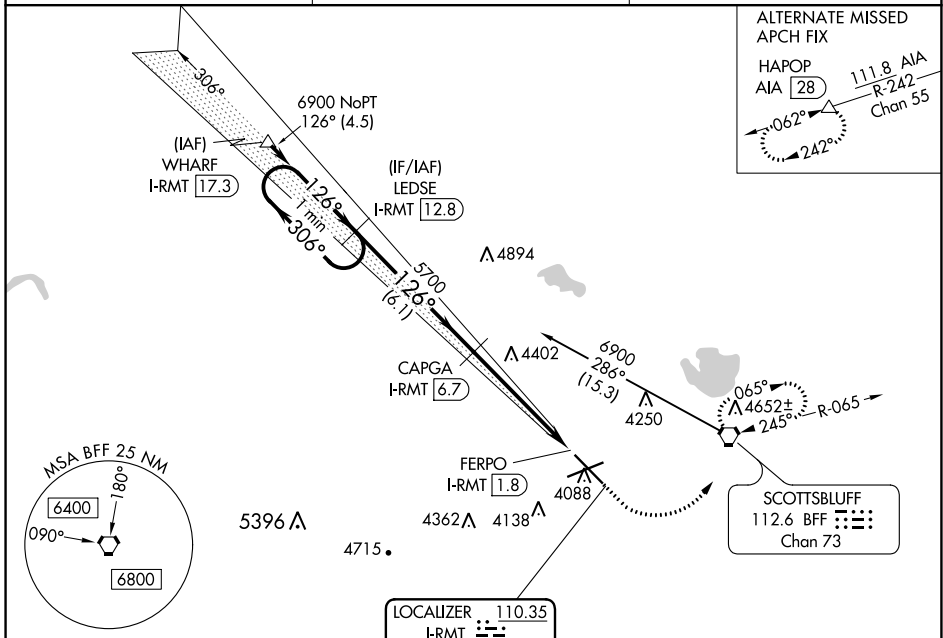
ILS or LOC/DME RWY 12

WESTERN NEBRASKA RGNL/WILLIAM B HEILIG FLD (BFF)

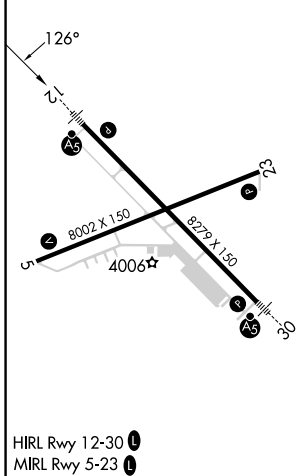
⚠ When local altimeter setting not received, use Alliance altimeter setting and increase DA 91 feet; all MDAs 100 feet, and S-LOC 12 and Circling Cat B/C/D visibilities ¼ mile. For inoperative MALSR, when using Alliance altimeter setting, increase S-ILS 12 visibility to 1. VDP NA when using Alliance altimeter setting.



MALSR  **MISSED APPROACH:** Climb to 4500 then climbing left turn to 6900 direct BFF VORTAC and hold, continue climb-in-hold to 6900.

ASOS 121.025	DENVER CENTER 127.95 338.2	UNICOM 123.0 (CTAF) 
------------------------	--------------------------------------	---

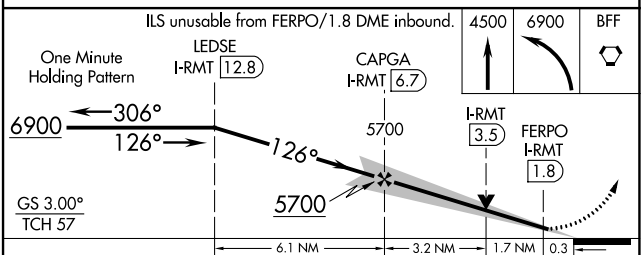


ELEV 3967	D	TDZE 3963
-----------	----------	-----------



HIRL Rwy 12-30 
MIRL Rwy 5-23 

DME REQUIRED



CATEGORY	A	B	C	D
S-ILS 12	4163-½ 200 (200-½)			
S-LOC 12	4640-½ 677 (700-½)	4640-1½ 677 (700-1½)	4640-1¾ 677 (700-1¾)	4640-1¾ 677 (700-1¾)
C CIRCLING	4640-1 673 (700-1)	4640-2 673 (700-2)	4740-2½ 773 (800-2½)	4740-2½ 773 (800-2½)

NC-2, 07 SEP 2023 to 05 OCT 2023

NC-2, 07 SEP 2023 to 05 OCT 2023