

| | | |
|--|------------------------|---|
| WAAS CH 73005 W12A | APP CRS 126° | Rwy Idg 8279 TDZE 3963 Apt Elev 3967 |
|--|------------------------|---|

RNAV (GPS) RWY 12

WESTERN NEBRASKA RGNL/WILLIAM B HEILIG FLD (BFF)

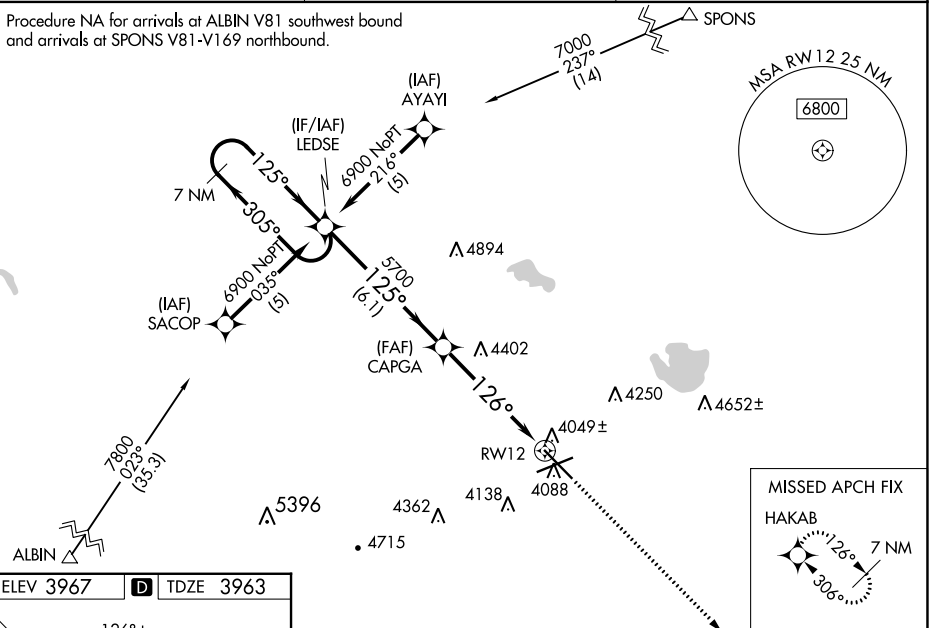
⚠ When local altimeter setting not received, use Alliance altimeter setting and increase all DAs 91 feet and all MDAs 100 feet; increase LPV, LNAV/VNAV, LNAV Cat A/B and Circling Cat B visibilities ¼ mile; increase LNAV and Circling Cat C/D visibilities ½ mile. For inoperative MALSR, when using Alliance altimeter setting, increase LPV all Cats visibility to 1¼, and LNAV Cat A visibility to 1. For uncompensated Baro-VNAV systems, LNAV/VNAV NA below -22°C (-7°F) or above 41°C (105°F). Baro-VNAV NA when using Alliance altimeter setting. VDP NA when using Alliance altimeter setting. DME/DME RNP-0.3 NA.

MALSR

MISSED APPROACH:
Climb to 6700 direct HAKAB and hold.

| | | |
|------------------------|--------------------------------------|--|
| ASOS 121.025 | DENVER CENTER 127.95 338.2 | UNICOM 123.0 (CTAF) 1 |
|------------------------|--------------------------------------|--|

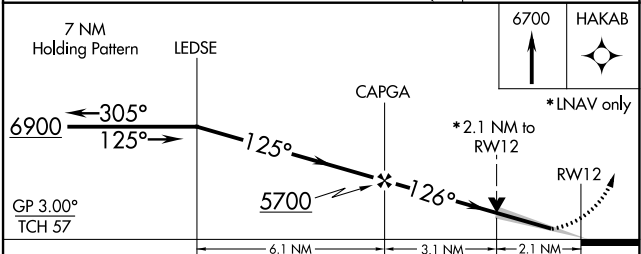
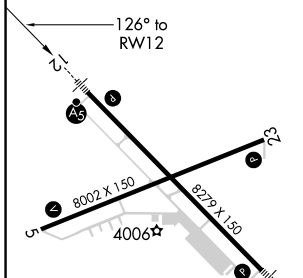
Procedure NA for arrivals at ALBIN V81 southwest bound and arrivals at SPONS V81-V169 northbound.



NC-2, 07 SEP 2023 to 05 OCT 2023

NC-2, 07 SEP 2023 to 05 OCT 2023

| | | |
|-----------|----------|-----------|
| ELEV 3967 | D | TDZE 3963 |
|-----------|----------|-----------|



| CATEGORY | A | B | C | D |
|-------------------|--------------------|----------------------|----------------------|----------------------|
| LPV DA | 4213-½ 250 (300-½) | | | |
| LNAV/VNAV DA | 4340-¾ 377 (400-¾) | | | |
| LNAV MDA | 4700-½ 737 (800-½) | 4700-1½ 737 (800-1½) | 4700-1¾ 737 (800-1¾) | 4700-1¾ 737 (800-1¾) |
| C CIRCLING | 4700-1 733 (800-1) | 4700-2 733 (800-2) | 4740-2½ 773 (800-2½) | 4740-2½ 773 (800-2½) |

RNAV (GPS) RWY 12