

WAAS CH <b>45606</b> <b>W23A</b>	APP CRS <b>238°</b>	Rwy Idg 087°	<b>8002</b>
		TDZE	<b>3967</b>
		Apt Elev	<b>3967</b>

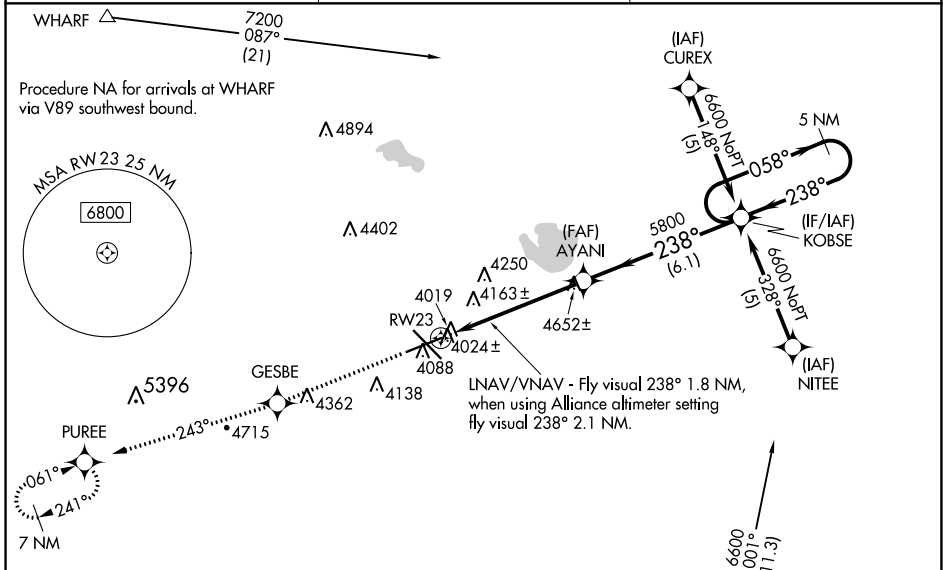
# RNAV (GPS) RWY 23

WESTERN NEBRASKA RGNL/WILLIAM B HEILIG FLD (BTF)

**⚠** When local altimeter setting not received, use Alliance altimeter setting: increase LPV DA to 4347 feet and visibility 1/4 SM; increase LNAV/VNAV DA to 4679 feet; increase all MDAs 100 feet and visibility Cats C and D 1/2 SM. Baro-VNAV NA when using Alliance altimeter setting. For uncompensated Baro-VNAV systems, LNAV/VNAV NA below -22°C (-7°F) or above 41°C (105°F). VDP NA when using Alliance altimeter setting. Visibility reduction by helicopters NA. DME/DME RNP-0.3 NA.

**MISSED APPROACH:** Climb to 6700 direct GESBE and via 243° track to PUREE and hold.

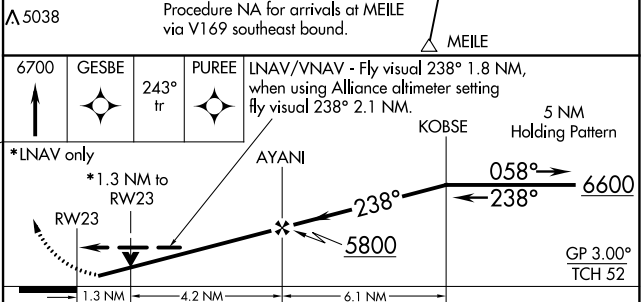
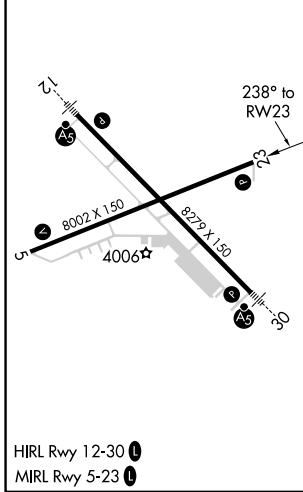
ASOS <b>121.025</b>	DENVER CENTER <b>127.95 338.2</b>	UNICOM <b>123.0 (CTAF) 1</b>
------------------------	--------------------------------------	---------------------------------



NC-2, 07 SEP 2023 to 05 OCT 2023

NC-2, 07 SEP 2023 to 05 OCT 2023

ELEV 3967	<b>D</b>	TDZE 3967
-----------	----------	-----------



CATEGORY	A	B	C	D
LPV DA	4256-1 289 (300-1)			
LNAV/VNAV DA	4588-2 621 (700-2)			
LNAV MDA	4420-1	453 (500-1)	4420-1 1/4 453 (500-1 1/4)	4420-1 1/2 453 (500-1 1/2)
<b>C</b> CIRCLING	4500-1	533 (600-1)	4560-1 1/2 593 (600-1 1/2)	4740-2 1/2 773 (800-2 1/2)