

VOR/DME SHR 113.55 Chan 82(Y)	APP CRS 131°	Rwy Idg TDZE Apt Elev 8301 4014 4021
---	------------------------	--

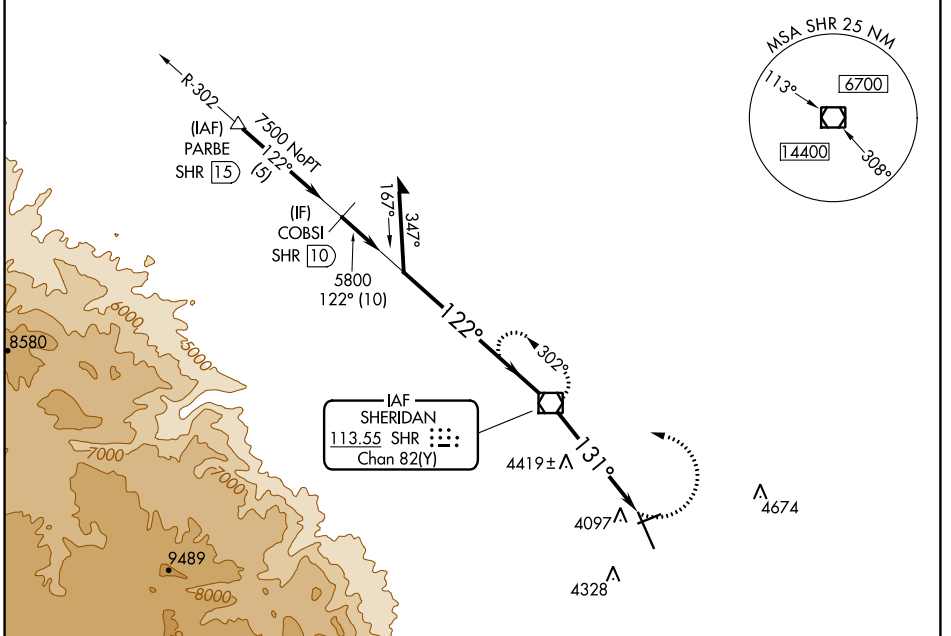
VOR RWY 15

SHERIDAN COUNTY (SHR)

When local altimeter setting not received, procedure NA. Night landing: Rwy 24 NA.

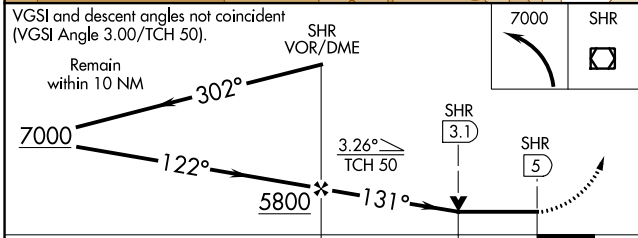
MISSED APPROACH: Climbing left turn to 7000 direct SHR VOR/DME and hold, continue climb-in-hold to 7000.

ASOS 135,175	SALT LAKE CENTER 127.75 351.9	UNICOM 123.0 (CTAF)
------------------------	---	-------------------------------



NW-1, 07 SEP 2023 to 05 OCT 2023

NW-1, 07 SEP 2023 to 05 OCT 2023



ELEV 4021	TDZE 4014
-----------	-----------

Detailed approach diagram showing the final descent path. Key features include:

- 5039 X 75** and **8301 X 100** altitudes.
- Down** and **Up** slopes of 0.5% and 1.6% respectively.
- Altitudes:** 4007, 33, and 4021.
- Angles:** 131°, 122°, and 131°.

HIRL Rwy 15-33	MIRL Rwy 6-24	REIL Rws 6, 15, and 24			
FAF to MAP 5 NM					
Knots	60	90	120	150	180
Min:Sec	5:00	3:20	2:30	2:00	1:40

CATEGORY	A	B	C	D
S-15	4680-1	666 (700-1)	4680-1 7/8	666 (700-1 7/8)
C CIRCLING	4680-1	659 (700-1)	4860-2 1/2	5220-3
			839 (900-2 1/2)	1199 (1200-3)