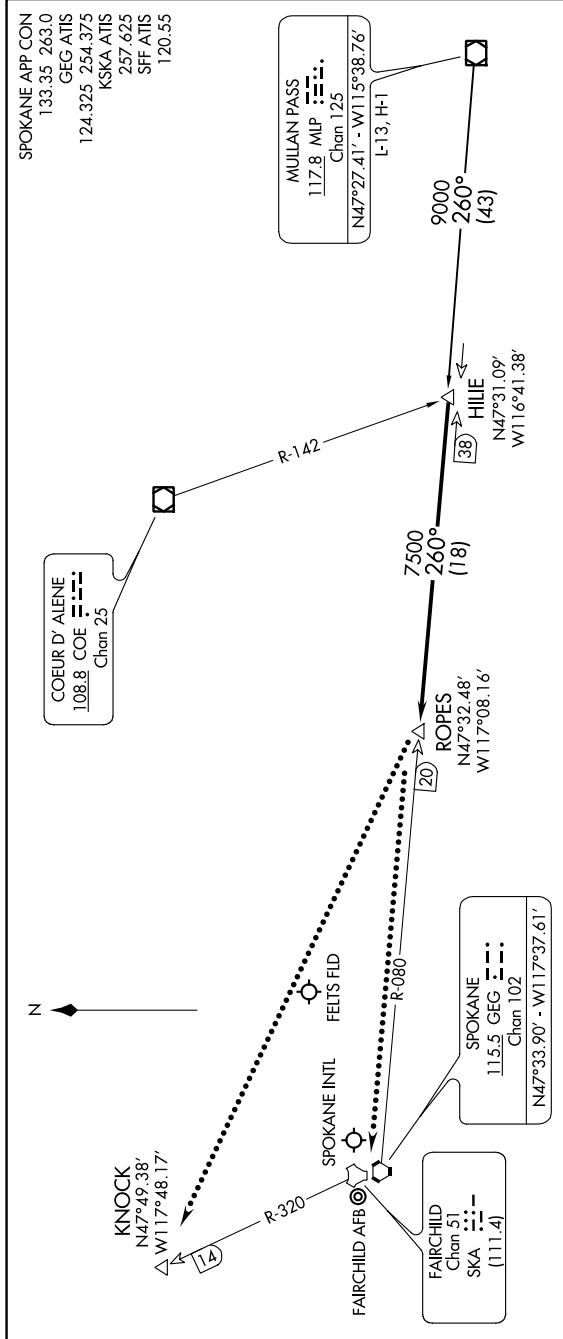


NW-1, 07 SEP 2023 to 05 OCT 2023



NOTE: DME and RADAR required.  
NOTE: Chart not to scale.

ARRIVAL ROUTE DESCRIPTION

MULLEN PASS TRANSITION (MLP.HILIE3): From over MLP VOR/DME on MLP R-260 to HILIE. Thence . . . . .  
. . . . . From over HILIE on SPOKANE VORTAC (GEG) R-080 to ROPES. Expect RADAR vectors to final approach course.

LOST COMMUNICATIONS

After ROPES:  
LANDING SPOKANE INTL or FELT'S FLD: Proceed to GEG VORTAC on GEG R-080, maintain last assigned altitude to GEG.  
LANDING FAIRCHILD AFB: Proceed to KNOCK direct, maintain last assigned altitude to KNOCK.

NW-1, 07 SEP 2023 to 05 OCT 2023