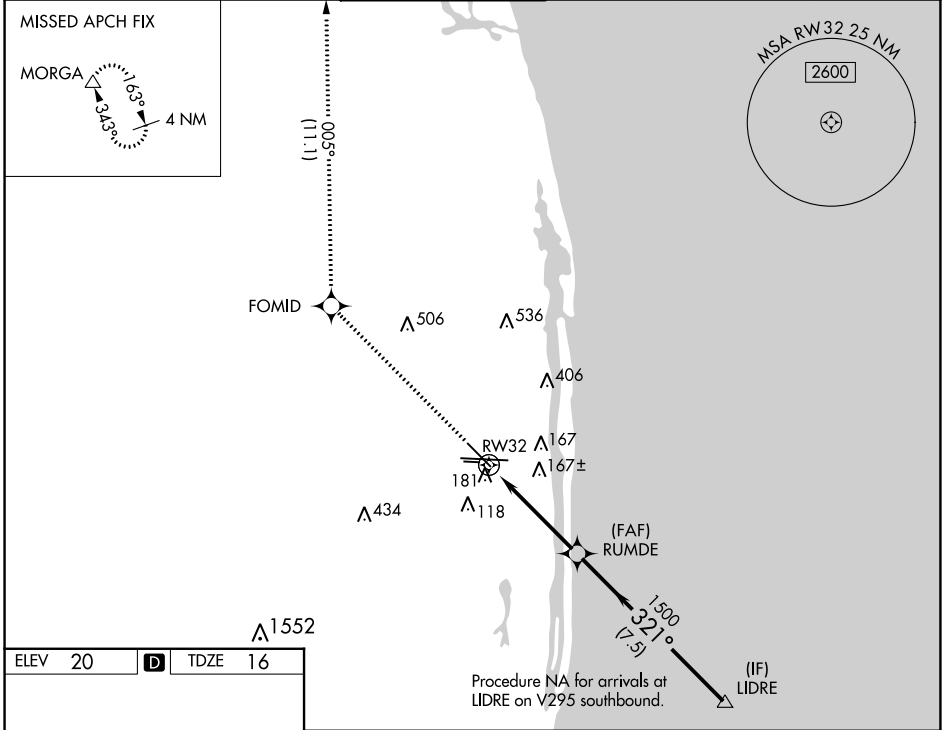


WAAS CH 62903 W32A	APP CRS 321°	Rwy Idg 6513 TDZE 16 Apt Elev 20
--	------------------------	---

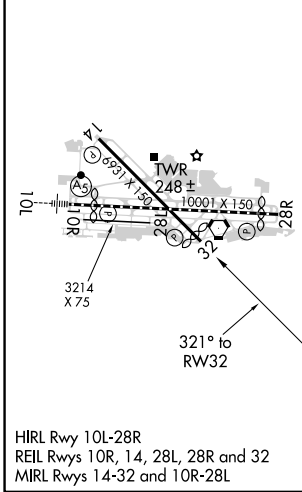
RNAV (GPS) Y RWY 32

PALM BEACH INTL (PBI)

RNP APCH - GPS.				MISSED APPROACH: Climb to 3000 direct FOMID and on track 005° to MORGA and hold.	
D-ATIS 123.75		PALM BEACH APP CON 128.3 317.4		PALM BEACH TOWER 119.1 257.8	
				GND CON 121.9 284.6	
				CLNC DEL 121.6 284.6	
CPDLC					



ELEV 20	D	TDZE 16
---------	----------	---------



HIRL Rwy 10L-28R
REIL Rwy 10R, 14, 28L, 28R and 32
MIRL Rwy 14-32 and 10R-28L

3000	FOMID	MORGA	VGSi and RNAV glidepath not coincident (VGSi Angle 3.25/TCH 57).	
↑	✧	△		
	tr 005°			
			RUMDE	LIDRE
			1500	3000
			1500	GP 3.00° TCH 57
			1.1 NM to RWY 32	
			1.1 NM	3.4 NM
			7.5 NM	
CATEGORY	A	B	C	D
LPV DA		266-3/4	250 (300-3/4)	
LNAV/VNAV DA		342-1	326 (400-1)	
LNAV MDA	440-1	424 (500-1)	440-1 1/4	424 (500-1 1/4)
C CIRCLING	560-1	540 (600-1)	740-2 720 (800-2)	780-2 1/2 760 (800-2 1/2)

SE-3, 07 SEP 2023 to 05 OCT 2023

SE-3, 07 SEP 2023 to 05 OCT 2023