

LOC I-GMX 111.55	APP CRS 238°	Rwy Idg 8016 TDZE 26 Apt Elev 32
----------------------------	------------------------	---

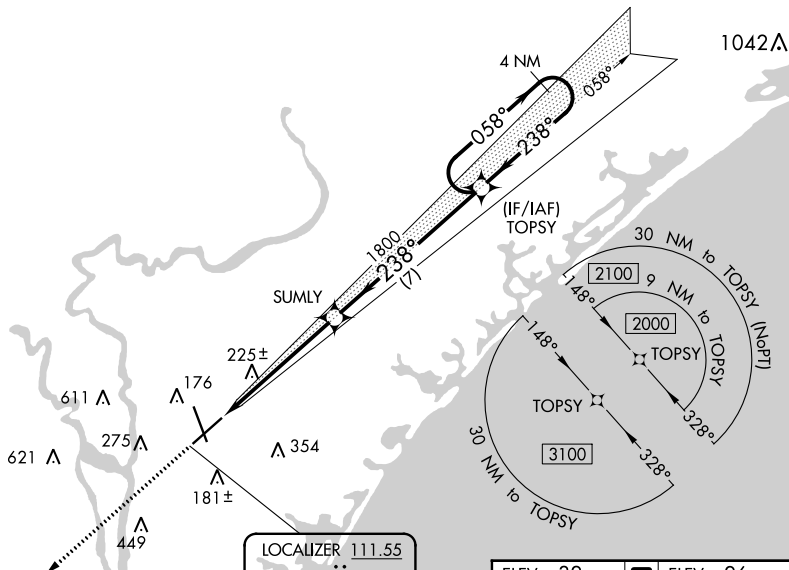
ILS Z RWY 24

WILMINGTON INTL (ILM)

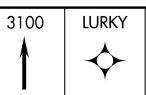
<p>RNAV 1-GPS required. **RVR 1800 authorized with use of FD or AP or HUD to DA.</p>	<p>MALSR AS</p>	<p>MISSED APPROACH: Climb to 3100 direct LURKY and hold.</p>

<p>ATIS 124.975</p>	<p>WILMINGTON APP CON ★ 118.25 284.65 (164°-343°) 135.75 317.425 (344°-163°)</p>	<p>WILMINGTON TOWER ★ 119.9 (CTAF) 239.3</p>	<p>GND CON 121.9 348.6</p>	<p>UNICOM 122.95</p>
--------------------------------	--	--	---------------------------------------	---------------------------------

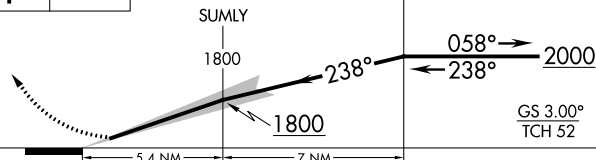
RNAV 1-GPS or RADAR REQUIRED



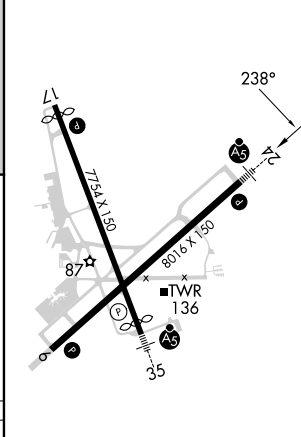
LOCALIZER 111.55
I-GMX



VGSI and ILS glidepath not coincident (VGSI Angle 3.00/TCH 48).
TOPSY 4 NM Holding Pattern
GS 3.00° TCH 52



ELEV 32	D	ELEV 26
---------	---	---------



CATEGORY	A	B	C	D
S-ILS 24**	226/24 200 (200-1/2)			

HIRL Rwy 6-24 and 17-35
REL Rwy 6 and 17

SE-2, 07 SEP 2023 to 05 OCT 2023

SE-2, 07 SEP 2023 to 05 OCT 2023