

WAAS CH 90499 W17A	APP CRS 169°	Rwy Idg 6604 TDZE 32 Apt Elev 32
---------------------------------	------------------------	---

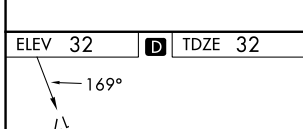
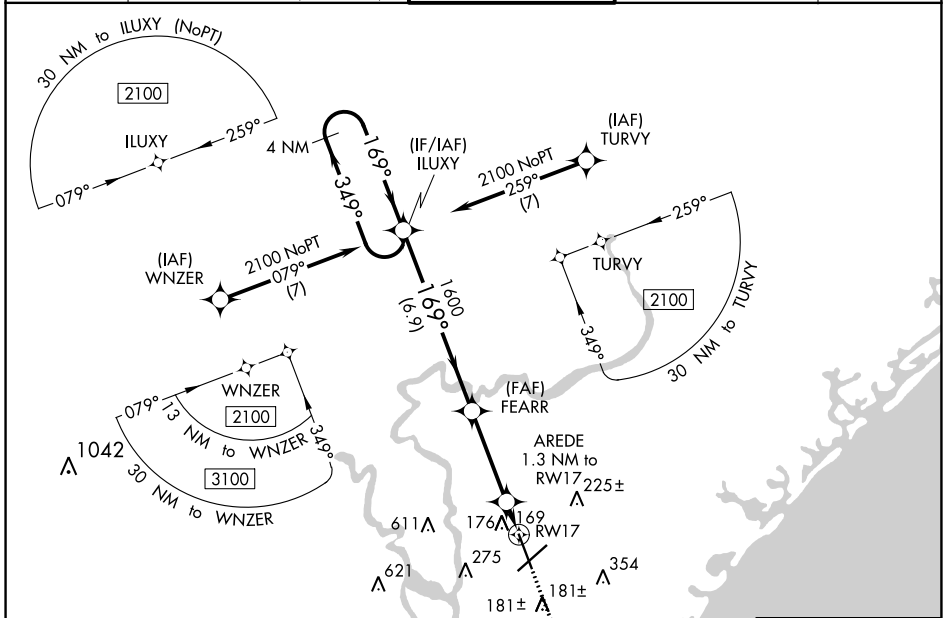
RNAV (GPS) RWY 17

WILMINGTON INTL (ILM)

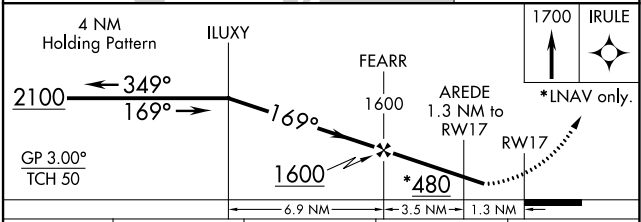
⚠ For uncompensated Baro-VNAV systems, LNAV/VNAV NA below -7°C (20°F) or above 54°C (130°F). DME/DME RNP-0.3 NA. Rwy 17 helicopter visibility reduction below $\frac{3}{4}$ SM NA.

⚠ MISSED APPROACH: Climb to 1700 direct IRULE and hold.

ATIS 124.975	WILMINGTON APP CON * 118.25 284.65 (164°-343°) 135.75 317.425 (344°-163°)	WILMINGTON TOWER * 119.9 (CTAF) 239.3	GND CON 121.9 348.6	UNICOM 122.95
------------------------	---	--	-------------------------------	-------------------------



ELEV 32	D	TDZE 32
<p>HIRL Rwy 6-24 and 17-35 Ⓛ</p> <p>REIL Rwy 6 and 17 Ⓛ</p>		



CATEGORY	A	B	C	D
LPV DA		369- $\frac{1}{8}$	337 (400- $\frac{1}{8}$)	
LNAV/VNAV DA		405- $\frac{1}{4}$	373 (400- $\frac{1}{4}$)	
LNAV MDA	420-1	388 (400-1)	420- $\frac{1}{8}$	388 (400- $\frac{1}{8}$)
C CIRCLING	560-1	528 (600-1)	720-2 688 (700-2)	920-3 888 (900-3)

SE-2, 07 SEP 2023 to 05 OCT 2023

SE-2, 07 SEP 2023 to 05 OCT 2023