


WAAS CH <b>50499</b> <b>W35A</b>	APP CRS <b>349°</b>	Rwy Idg <b>7204</b> TDZE <b>31</b> Apt Elev <b>32</b>
--	------------------------	---

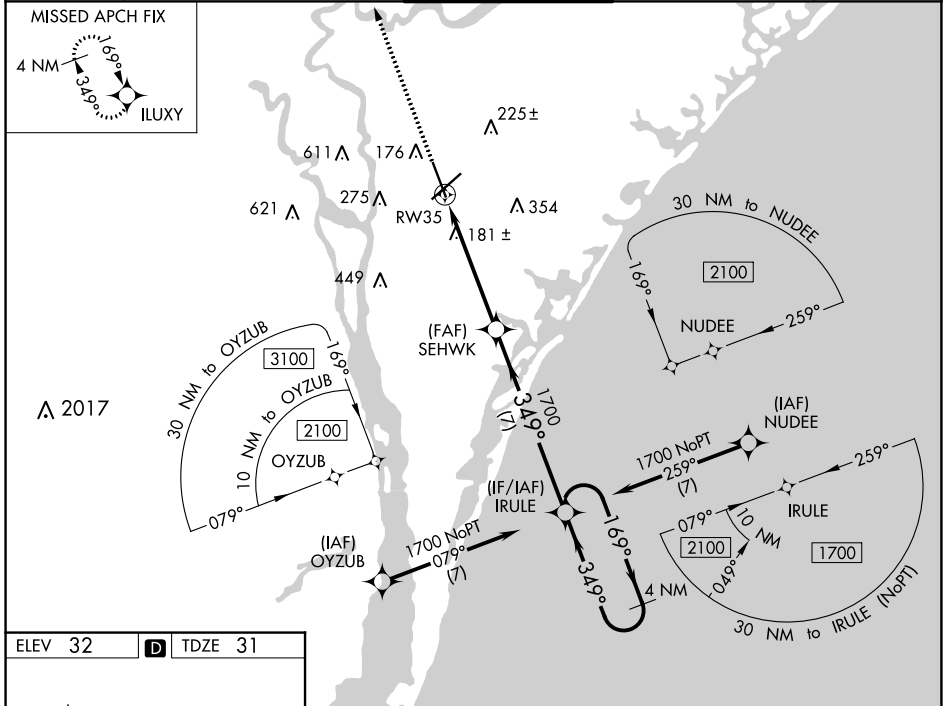
# RNAV (GPS) RWY 35

WILMINGTON INTL (ILM)

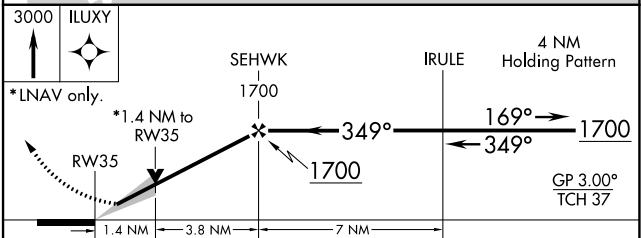
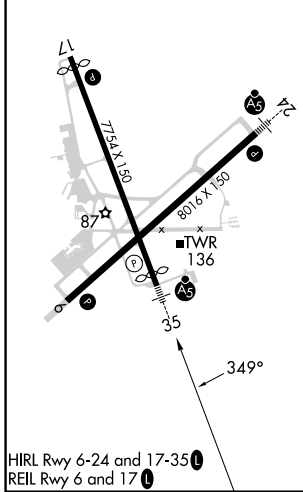
**⚠** For uncompensated Baro-VNAV systems, LNAV/VNAV NA below -7°C (20°F) or above 54°C (130°F). DME/DME RNP-0.3 NA. For inop ALS, increase LNAV Cats C/D visibility to 1½ SM.

**MALSR**  
 MISSED APPROACH:  
Climb to 3000 direct  
ILUXY and hold.

ATIS <b>124.975</b>	WILMINGTON APP CON ★ <b>118.25 284.65</b> (164°-343°) <b>135.75 317.425</b> (344°-163°)	WILMINGTON TOWER ★ <b>119.9</b> (CTAF) <b>0 239.3</b>	GND CON <b>121.9 348.6</b>	UNICOM <b>122.95</b>
------------------------	---	--	-------------------------------	-------------------------



ELEV 32	<b>D</b>	TDZE 31
---------	----------	---------



CATEGORY	A	B	C	D
LPV DA	242/24		211 (300-½)	
LNAV/VNAV DA	426/45		395 (400-¾)	
LNAV MDA	500/24 469 (500-½)		500/50 469 (500-1)	
<b>C</b> CIRCLING	560-1 528 (600-1)		720-2 920-3 688 (700-2) 888 (900-3)	

SE-2, 07 SEP 2023 to 05 OCT 2023

SE-2, 07 SEP 2023 to 05 OCT 2023