

WAAS CH <b>86599</b> <b>W06A</b>	APP CRS <b>058°</b>	Rwy Idg TDZE Apt Elev	<b>8016</b> <b>28</b> <b>32</b>
--	------------------------	-----------------------------	---------------------------------------

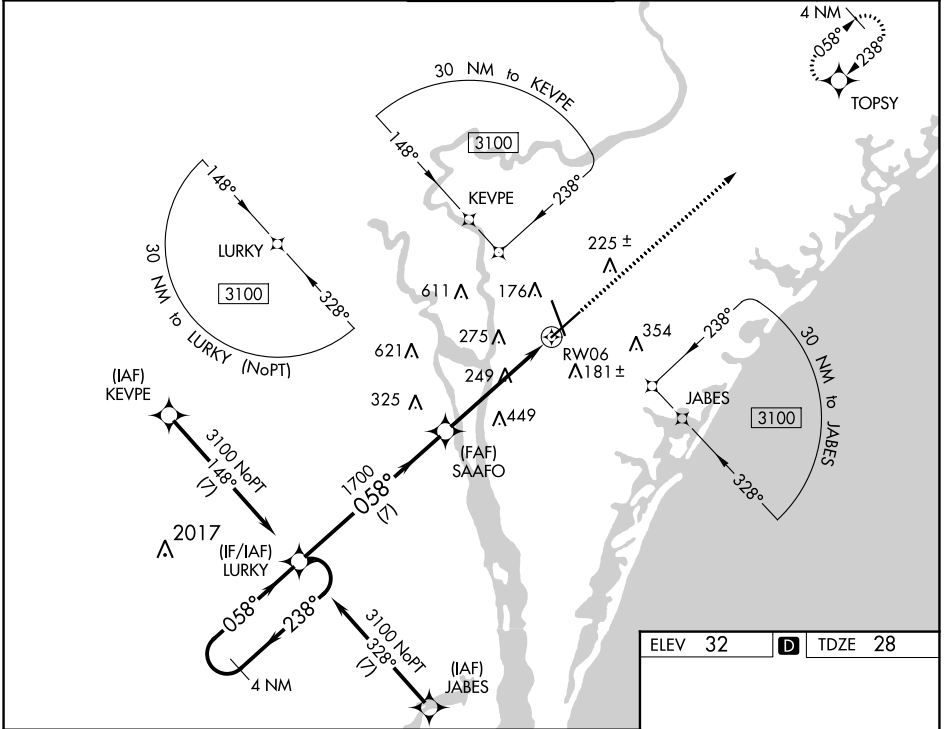
# RNAV (GPS) RWY 6

WILMINGTON INTL (ILM)

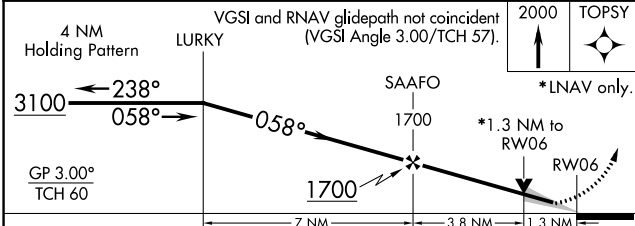
**⚠** For uncompensated Baro-VNAV systems, LNAV/VNAV NA below -7°C (20°F) or above 54°C (130°F).  
DME/DME RNP-0.3 NA.

MISSED APPROACH: Climb to 2000 direct TOPSY and hold.

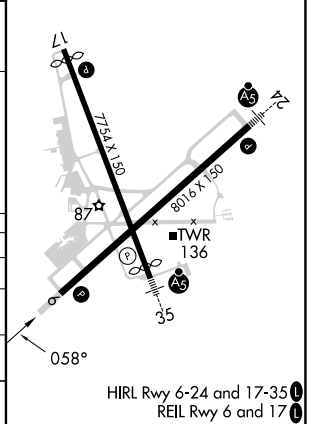
ATIS <b>124.975</b>	WILMINGTON APP CON * <b>118.25 284.65</b> (164°-343°) <b>135.75 317.425</b> (344°-163°)	WILMINGTON TOWER * <b>119.9</b> (CTAF) <b>239.3</b>	GND CON <b>121.9 348.6</b>	UNICOM <b>122.95</b>
------------------------	---	--	-------------------------------	-------------------------



ELEV 32	<b>D</b> TDZE 28
---------	------------------



CATEGORY	A	B	C	D
LPV DA	228/40 200 (200-¾)			
LNAV/VNAV DA	434/60 406 (500-1½)			
LNAV MDA	500/55 472 (500-1)		500-1¾ 472 (500-1¾)	
<b>C</b> CIRCLING	560-1 528 (600-1)		720-2 688 (700-2) 920-3 888 (900-3)	



SE-2, 07 SEP 2023 to 05 OCT 2023

SE-2, 07 SEP 2023 to 05 OCT 2023