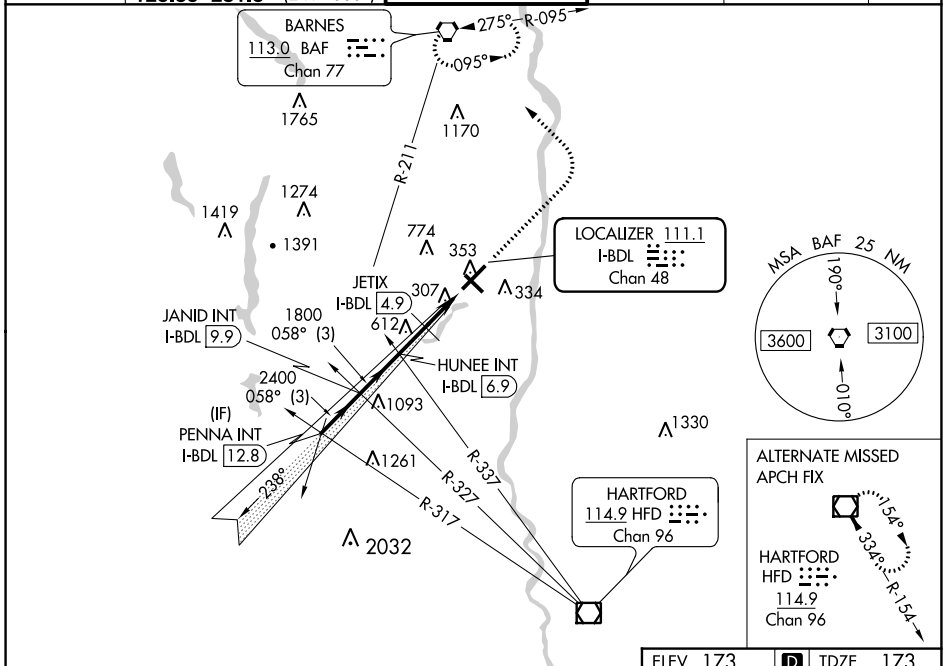


COPTER ILS or LOC RWY 6

BRADLEY INTL (BDL)

LOC/DME I-BDL	APP CRS	Rwy Idg	9509
111.1	058°	TDZE	173
Chan 48		Apt Elev	173

RADAR required for procedure entry.		ALSIF-2	MISSED APPROACH: Climb to 4000 then left turn direct BAF VORTAC and hold.	
For inop ALS, increase H-ILS 6 visibility to RVR 2400 and H-LOC 6 visibility to RVR 4000.				
D-ATIS	BRADLEY APP CON	BRADLEY TOWER	GND CON	CLNC DEL
118.15	123.95 290.55 (061°-240°)	120.3 351.8	121.9 348.6	121.75 322.3
	125.35 281.5 (241°-060°)			CPDLC



NE-1, 07 SEP 2023 to 05 OCT 2023

NE-1, 07 SEP 2023 to 05 OCT 2023

PENNA INT I-BDL 12.8 JANID INT I-BDL 9.9 HUNEE INT I-BDL 6.9 JETIX I-BDL 4.9 I-BDL 2.9 I-BDL 1.9		VGSI and ILS glidepath not coincident (VGSI Angle 3.00/TCH 71). 4000 BAF
GS 3.00° HCH 54		
3000 058° 2400 1800 1160		
3 NM 3 NM 2 NM 1.9 NM 1 NM		
CATEGORY	COPTER	
H-ILS 6	273/12 100 (100-¼)	
H-LOC 6	1160/24 987 (1000-½)	
H-ILS 6	CAT II RA 101	
JETIX FIX MINIMUMS (DME REQUIRED)		
H-LOC 6	560/24 387 (400-½)	
COPTER ILS CATEGORY II - SPECIAL AIRCREW & AIRCRAFT CERTIFICATION REQUIRED		

ELEV 173	D	TDZE 173			
TWR 345 9510 X 200 5847 X 150 058°					
TDZ/CL Rwy 6 and 24 HIRL Rwys 6-24 and 15-33 REIL Rwys 6 and 15					
FAF to MAP 4.9 NM					
Knots	45	60	75	90	105
Min:Sec	6:32	4:55	3:55	3:16	2:48