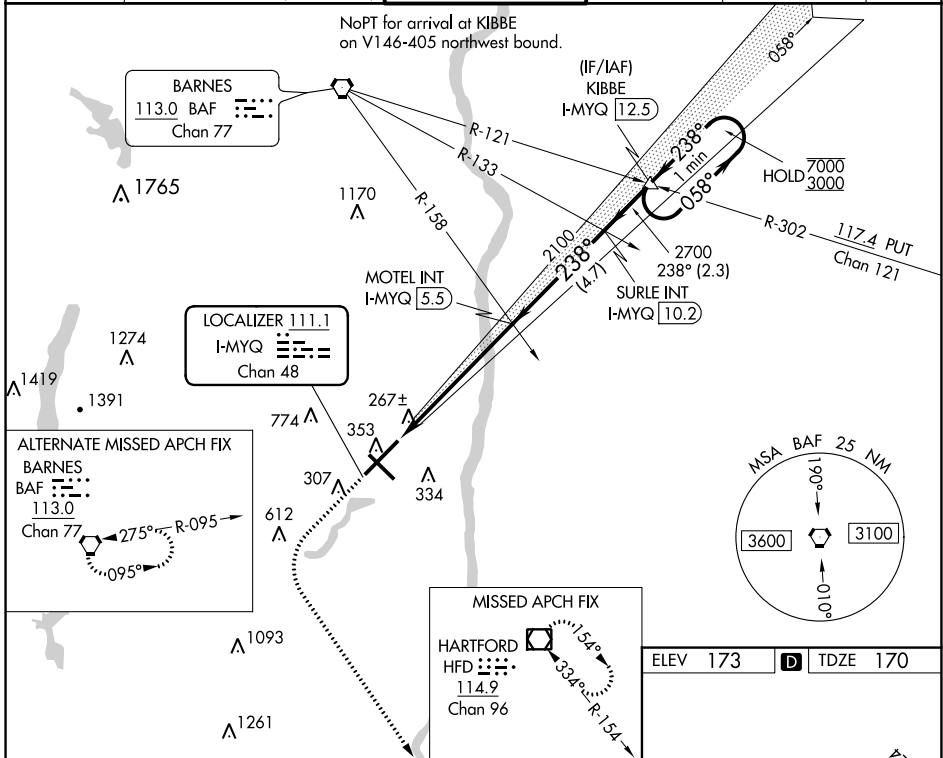


LOC/DME I-MYQ 111.1 Chan 48	APP CRS 238°	Rwy Idg TDZE Apt Elev	9509 170 173
---	------------------------	-----------------------------	---

ILS RWY 24 (SA CAT I & II)
BRADLEY INTL (BDL)

<p>SA CAT I: Requires specific OPSPEC, MSPEC or LOA approval. SA CAT II: Requires specific OPSPEC, MSPEC or LOA approval.</p>	MALSR	MISSED APPROACH: Climb to 4000 then left turn direct HFD VOR/DME and hold.

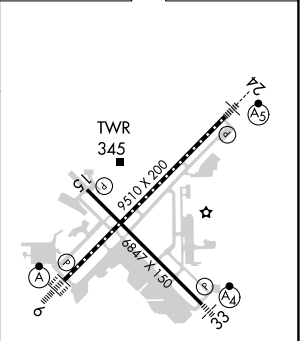
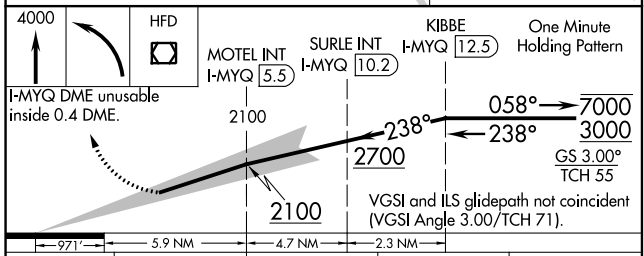
D-ATIS 118.15	BRADLEY APP CON 123.95 290.55 (061°-240°) 125.35 281.5 (241°-060°)	BRADLEY TOWER 120.3 351.8	GND CON 121.9 348.6	CLNC DEL 121.75 322.3	CPDLC
-------------------------	--	-------------------------------------	-------------------------------	---------------------------------	-------



NE-1, 07 SEP 2023 to 05 OCT 2023

NE-1, 07 SEP 2023 to 05 OCT 2023

ELEV 173	D TDZE 170
----------	-------------------



CATEGORY	A	B	C	D
S-ILS 24	SA CAT I RA 163/14	150	DA 320	
S-ILS 24	SA CAT II RA 113/12	100	DA 270	

SA CATEGORY I & II ILS-SPECIAL AIRCREW & AIRCRAFT CERTIFICATION REQUIRED

HIRL Rwy 6-24 and 15-33
REIL Rwy 6 and 15
TDZ/CL Rwy 6 and 24