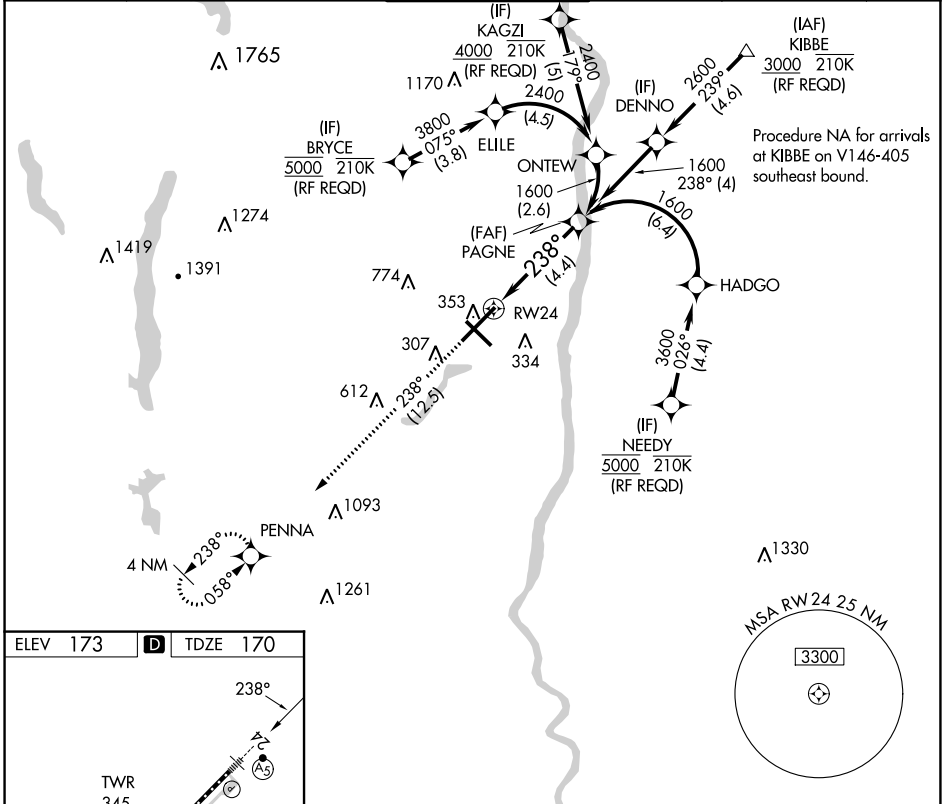


APP CRS	Rwy Idg	<b>9509</b>
<b>238°</b>	TDZE	<b>170</b>
	Apf Elev	<b>173</b>

# RNAV (RNP) Z RWY 24

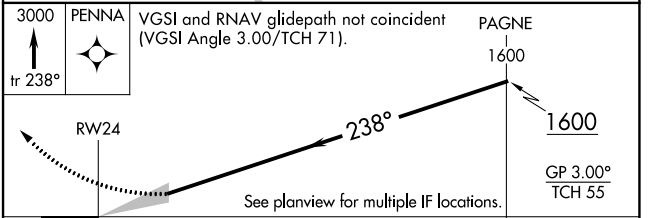
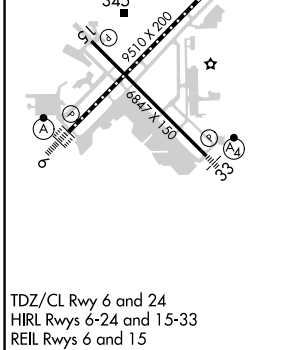
BRADLEY INTL (BDL)

<p><b>▽</b> For uncompensated Baro-VNAV systems, procedure NA below -18°C (0°F) or above 54°C (130°F). GPS required. For inop ALS, increase all Cats visibility to 1½ SM.</p>		<p>MALSR</p>	<p>MISSED APPROACH: Climb to 3000 on track 238° to PENNA and hold.</p>		
D-ATIS	BRADLEY APP CON	BRADLEY TOWER	GND CON	CLNC DEL	CPDLC
<b>118.15</b>	<b>123.95 290.55</b> (061°-240°) <b>125.35 281.5</b> (241°-060°)	<b>120.3 351.8</b>	<b>121.9 348.6</b>	<b>121.75 322.3</b>	



NE-1, 07 SEP 2023 to 05 OCT 2023

NE-1, 07 SEP 2023 to 05 OCT 2023



CATEGORY	A	B	C	D
RNP 0.30 DA	622/60		452 (500-1¼)	

## AUTHORIZATION REQUIRED