

APP CRS	Rwy Idg	9509
058°	TDZE	173
	Apt Elev	173

RNAV (RNP) Z RWY 6

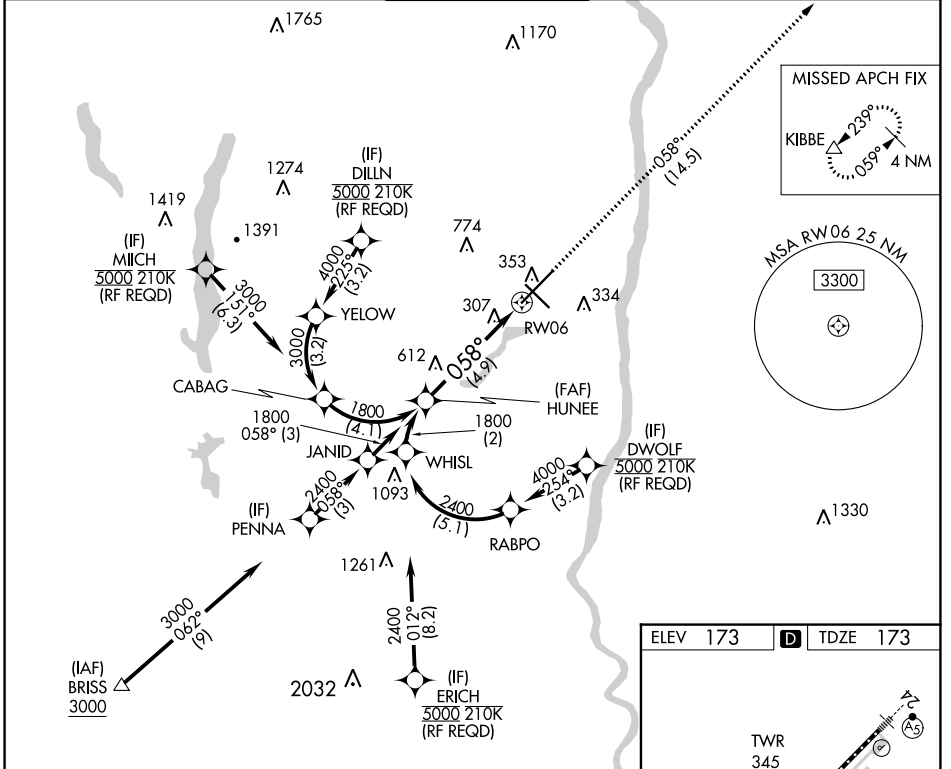
BRADLEY INTL (BDL)

▽ For uncompensated Baro-VNAV systems, procedure NA below -18°C (0°F) or above 54°C (130°F). GPS required. For inop ALS, increase RNP 0.11 all Cats visibility to RVR 5500 and RNP 0.30 all Cats visibility to 1 3/8 SM.

ALSF-2

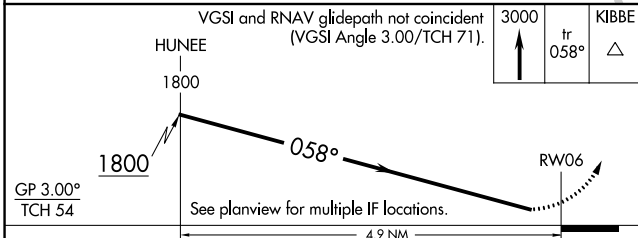
MISSED APPROACH: Climb to 3000 on track 058° to KIBBE and hold.

D-ATIS	BRADLEY APP CON	BRADLEY TOWER	GND CON	CLNC DEL	CPDLC
118.15	123.95 290.55 (061°-240°) 125.35 281.5 (241°-060°)	120.3 351.8	121.9 348.6	121.75 322.3	

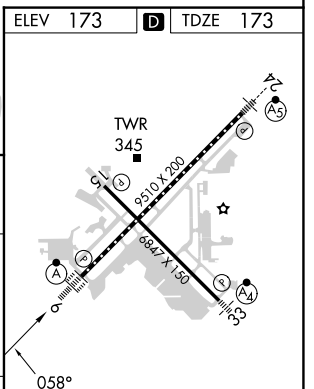


NE-1, 07 SEP 2023 to 05 OCT 2023

NE-1, 07 SEP 2023 to 05 OCT 2023



CATEGORY	A	B	C	D
RNP 0.11 DA		545/40	372 (400-3/4)	
RNP 0.30 DA		672/50	499 (500-1)	



AUTHORIZATION REQUIRED

TDZ/CL Rwy 6 and 24
HIRL Rwy 6-24 and 15-33
REIL Rwy 6 and 15