

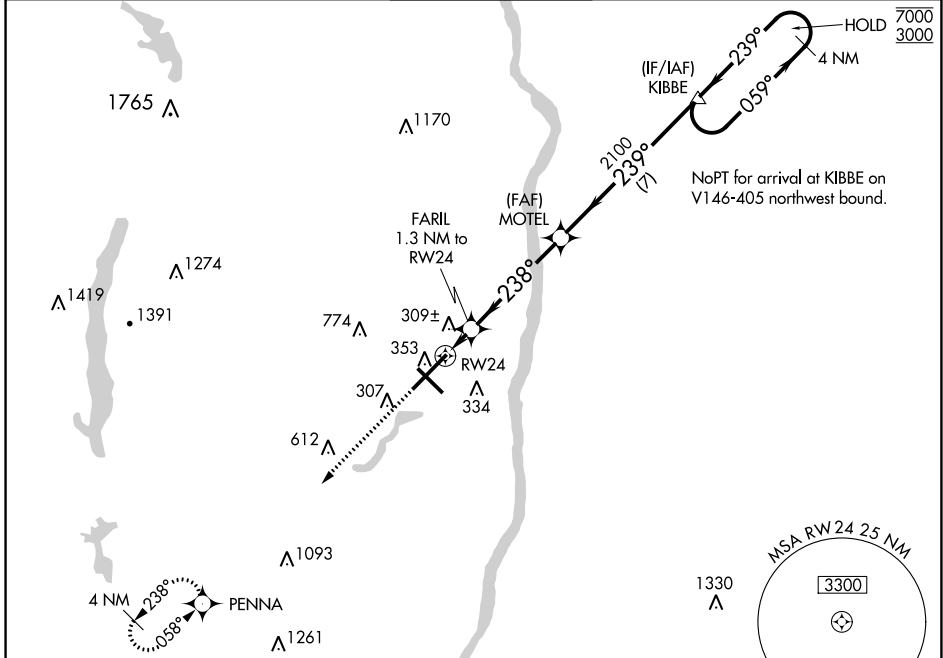
WAAS CH <b>97310</b> <b>W24A</b>	APP CRS <b>238°</b>	Rwy Idg TDZE <b>170</b> Apt Elev <b>173</b>	<b>9509</b>
--	------------------------	---	-------------

# RNAV (GPS) Y RWY 24

BRADLEY INTL (BDL)

RNP APCH-GPS. ▲ For uncompensated Baro-VNAV systems, LNAV/VNAV NA below -18°C or above 54°C.	MALSRR AS	MISSED APPROACH: Climb to 3000 direct PENNA and hold.
---	--------------	--

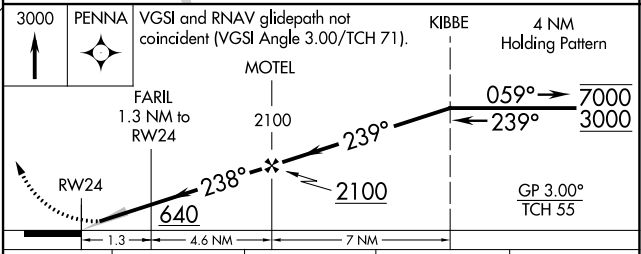
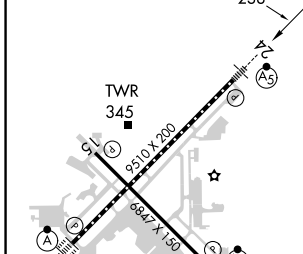
D-ATIS <b>118.15</b>	BRADLEY APP CON <b>123.95 290.55</b> (061°-240°) <b>125.35 281.5</b> (241°-060°)	BRADLEY TOWER <b>120.3 351.8</b>	GND CON <b>121.9 348.6</b>	CLNC DEL <b>121.75 322.3</b>	CPDLC
-------------------------	--	-------------------------------------	-------------------------------	---------------------------------	-------



NE-1, 07 SEP 2023 to 05 OCT 2023

NE-1, 07 SEP 2023 to 05 OCT 2023

ELEV 173	<b>D</b>	TDZE 170
----------	----------	----------



CATEGORY	A	B	C	D
LPV DA	370/18		200 (200-½)	
LNAV/VNAV DA	560/45		390 (400-¾)	
LNAV MDA	560/24	390 (400-½)		560/35 390 (400-¾)
<b>C</b> CIRCLING	700-1 527 (600-1)		1120-2¾ 947 (1000-2¾)	1220-3 1047 (1100-3)

HIRL Rws 6-24 and 15-33  
REIL Rws 6 and 15  
TDZ/CL Rws 6 and 24