

(ALTNN1 .ALTNN) 22139

AL-494 (FAA)

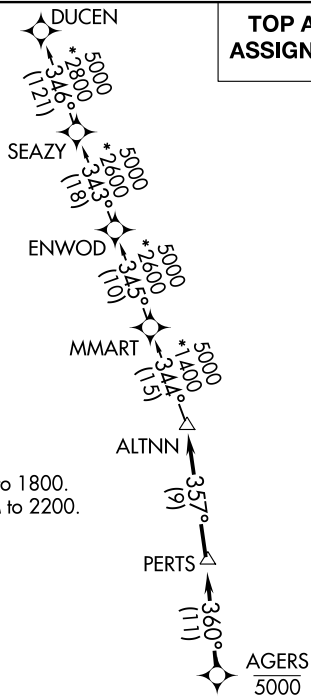
ALTNN ONE DEPARTURE (RNAV)

HOMESTEAD ARB (KHST)
HOMESTEAD, FLORIDA

ATIS *
132.275 269.9
CLNC DEL
121.75 275.8
GND CON
121.75 275.8
HOMESTEAD TOWER
133.45 279.55
MIAMI DEP CON
125.5 354.1

RNAV 1 - DME/DME/IRU or GPS.
RADAR required.

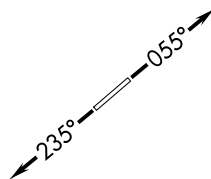
**TOP ALTITUDE:
ASSIGNED BY ATC**



TAKEOFF MINIMUMS

Rwy 6: Standard with minimum climb of 500' per NM to 1800.
Rwy 24: Standard with minimum climb of 500' per NM to 2200.

NOTE: Jet aircraft only.
NOTE: Accelerate to 250K, if unable, advise ATC.



NOTE: Chart not to scale.

DEPARTURE ROUTE DESCRIPTION

TAKEOFF RUNWAY 6: Climb on heading 055° or as assigned for RADAR vectors to cross AGERS at 5000, thence. . . .

TAKEOFF RUNWAY 24: Climb on heading 235° or as assigned for RADAR vectors to cross AGERS at 5000, thence. . . .

. . . . on track 360° to PERTS, then on track 357° to ALTNN, then on assigned transition, maintain ATC assigned altitude, expect filed altitude within 10 minutes after departure.

DUCEN TRANSITION (ALTNN1.DUCEN)

ALTNN ONE DEPARTURE (RNAV)
(ALTNN1 .ALTNN) 19MAY22

HOMESTEAD, FLORIDA
HOMESTEAD ARB (KHST)

SE-3, 07 SEP 2023 to 05 OCT 2023

SE-3, 07 SEP 2023 to 05 OCT 2023