

# BNGOS THREE DEPARTURE (RNAV)

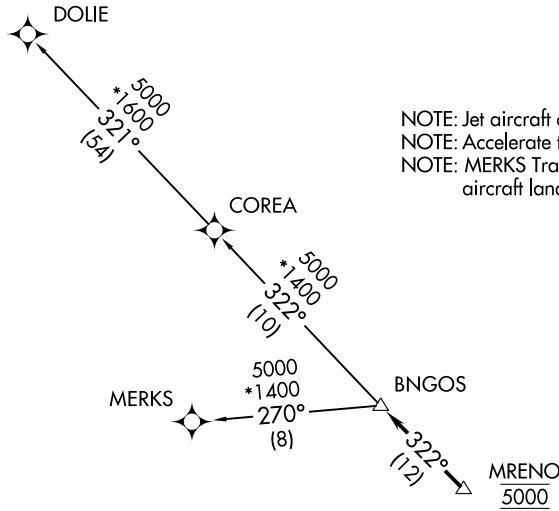
RNAV-1 DME/DME/IRU or GPS.

RADAR required.

**TOP ALTITUDE:  
ASSIGNED BY ATC**

ATIS ★  
 132.275 269.9  
 CLNC DEL  
 121.75 275.8  
 GND CON  
 121.75 275.8  
 HOMESTEAD TOWER  
 133.45 279.55  
 MIAMI DEP CON  
 125.5 354.1

NOTE: Jet aircraft only.  
 NOTE: Accelerate to 250K, if unable, advise ATC.  
 NOTE: MERKS Transition ATC assigned only except  
 aircraft landing: MKY, RSW, APF, PGD and FMY.



### TAKEOFF MINIMUMS

Rwy 6: Standard with minimum climb of 500' per NM to 1800.  
 Rwy 24: Standard with minimum climb of 500' per NM to 2200.

NOTE: Chart not to scale.



### DEPARTURE ROUTE DESCRIPTION

TAKEOFF RUNWAY 6: Climb on heading 055° or as assigned for RADAR vectors to cross MRENO at 5000, thence. . .

TAKEOFF RUNWAY 24: Climb on heading 235° or as assigned for RADAR vectors to cross MRENO at 5000, thence. . .

. . .on track 322° to BNGOS, then on transition, maintain ATC assigned altitude, expect clearance to filed altitude within 10 minutes after departure.

COREA TRANSITION (BNGOS3.COREA)

DOLIE TRANSITION (BNGOS3.DOLIE)

MERKS TRANSITION (BNGOS3.MERKS)