

(FLMGO1.FLMGO) 22139

AL-494 (FAA)

HOMESTEAD ARB (KHST)  
HOMESTEAD, FLORIDA

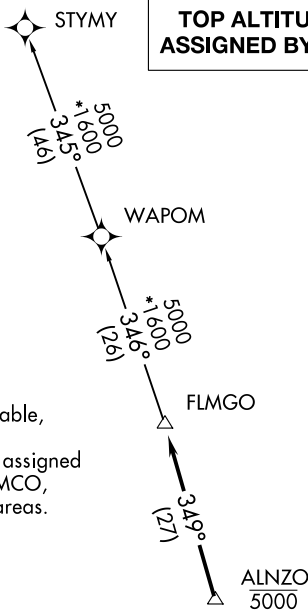
# FLMGO ONE DEPARTURE (RNAV)

RNAV 1 - DME/DME/IRU or GPS.

RADAR required.

**TOP ALTITUDE:  
ASSIGNED BY ATC**

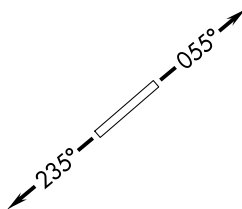
ATIS\*  
 132.275 269.9  
 CLNC DEL  
 121.75 275.8  
 GND CON  
 121.75 275.8  
 HOMESTEAD TOWER  
 133.45 279.55  
 MIAMI DEP CON  
 125.5 354.1



- NOTE: Jet aircraft only.
- NOTE: Accelerate to 250K, if unable, advise ATC.
- NOTE: WAPOM Transition ATC assigned except aircraft landing: MCO, DAB, and MLB terminal areas.

### TAKEOFF MINIMUMS

- Rwy 6: Standard with minimum climb of 500' per NM to 1800.
- Rwy 24: Standard with minimum climb of 500' per NM to 2200.



NOTE: Chart not to scale.

### DEPARTURE ROUTE DESCRIPTION

**TAKEOFF RUNWAY 6:** Climb on heading 055° or as assigned for RADAR vectors to cross ALNZO at 5000, thence. . . .

**TAKEOFF RUNWAY 24:** Climb on heading 235° or as assigned for RADAR vectors to cross ALNZO at 5000, thence. . . .

. . . on track 349° to FLMGO, then on assigned transition. Maintain ATC assigned altitude. Expect filed altitude within 10 minutes after departure.

STYMY TRANSITION (FLMGO1.STYMY)  
WAPOM TRANSITION (FLMGO1.WAPOM)

**FLMGO ONE DEPARTURE (RNAV)**  
 (FLMGO1.FLMGO) 19MAY22

HOMESTEAD, FLORIDA  
 HOMESTEAD ARB (KHST)

SE-3, 07 SEP 2023 to 05 OCT 2023

SE-3, 07 SEP 2023 to 05 OCT 2023