

(FOLZZ2.FOLZZ) 22139

AL-494 (FAA)

# FOLZZ TWO DEPARTURE (RNAV)

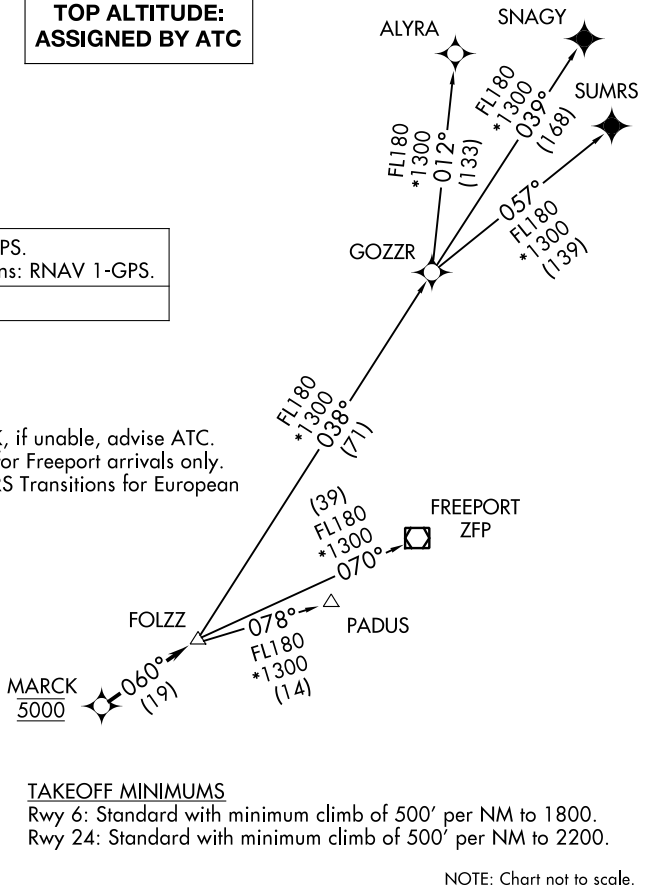
HOMESTEAD ARB (KHST)  
HOMESTEAD, FLORIDA

ATIS ★  
132.275 269.9  
CLNC DEL  
121.75 275.8  
GND CON  
121.75 275.8  
HOMESTEAD TOWER  
133.45 279.55  
MIAMI DEP CON  
125.5 354.1

**TOP ALTITUDE:  
ASSIGNED BY ATC**

RNAV-1 DME/DME/IRU or GPS.  
SNAGY and SUMRS Transitions: RNAV 1-GPS.  
RADAR required.

NOTE: Jet aircraft only.  
NOTE: Accelerate to 250K, if unable, advise ATC.  
NOTE: PADUS Transition for Freeport arrivals only.  
NOTE: SNAGY and SUMRS Transitions for European traffic only.



### TAKEOFF MINIMUMS

Rwy 6: Standard with minimum climb of 500' per NM to 1800.  
Rwy 24: Standard with minimum climb of 500' per NM to 2200.

NOTE: Chart not to scale.

### DEPARTURE ROUTE DESCRIPTION

TAKEOFF RUNWAY 6: Climb on heading 055° or as assigned for RADAR vectors to cross MARCK at 5000, thence. . .

TAKEOFF RUNWAY 24: Climb on heading 235° or as assigned for RADAR vectors to cross MARCK at 5000, thence. . .

. . . on track 060° to FOLZZ, then on transition. Maintain ATC assigned altitude, expect clearance to filed altitude within 10 minutes after departure.

- ALYRA TRANSITION (FOLZZ2.ALYRA)
- FREEPORT TRANSITION (FOLZZ2.ZFP)
- GOZZR TRANSITION (FOLZZ2.GOZZR)
- PADUS TRANSITION (FOLZZ2.PADUS)
- SNAGY TRANSITION (FOLZZ2.SNAGY)
- SUMRS TRANSITION (FOLZZ2.SUMRS)

**FOLZZ TWO DEPARTURE (RNAV)**  
(FOLZZ2.FOLZZ) 19MAY22

HOMESTEAD, FLORIDA  
HOMESTEAD ARB (KHST)

SE-3, 07 SEP 2023 to 05 OCT 2023

SE-3, 07 SEP 2023 to 05 OCT 2023