

HI-ILS or LOC Y RWY 6

LOC I-HST 109.9	APCH CRS 055°	Rwy ldg 11,201	TDZE 5	Arpt Elev 6
---------------------------	-------------------------	-------------------	-----------	----------------

AL-494 [USAF]

HOMESTEAD ARB (KHST)

RADAR or DME required.



MISSED APPROACH: Climb to 800 then climbing right turn to 3000 intercept HST TACAN R-180 to JOMIN and hold.

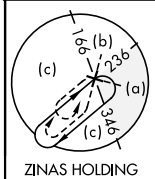
ATIS ★
132.275 269.9

APP CON
123.8 257.675

TOWER
133.45 279.55

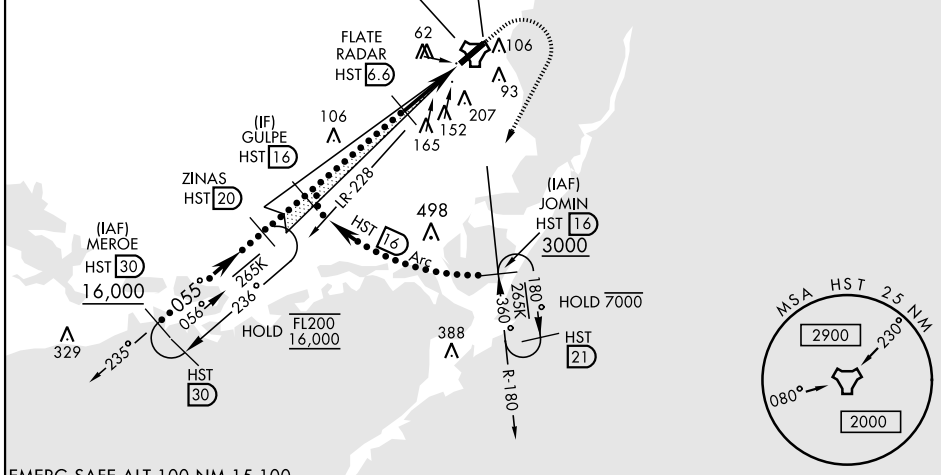
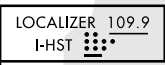
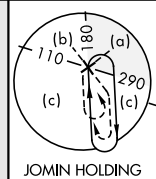
GND CON
121.75 275.8

CLNC DEL
121.75 275.8



CAUTION: Heliport and stadium 2.2 NM final Rwy 6 at Homestead ARB (stadium may be lit after dark).

Misled approach requires use of RNAV or ATC RADAR monitoring.



EMERG SAFE ALT 100 NM 15,100

					ELEV 6	TDZE 5
					HIRL Rwy 6-24	
GS 2.50° TCH 54						
CATEGORY	C	D	E			
S-ILS 6 *	205/24	200 (200-½)				
S-LOC 6 **	460/45	455 (500-7%)				
*** CIRCLING	520-1½ 514 (600-1½)	580-2 574 (600-2)	780-2¾ 774 (800-2¾)			
	Knots	120	140	160	180	200
	Min:Sec	2:30	2:09	1:53	1:40	1:30

HI-ILS or LOC Y RWY 6

SE-3, 07 SEP 2023 to 05 OCT 2023

SE-3, 07 SEP 2023 to 05 OCT 2023