

HI-TACAN Y RWY 6

TACAN HST Chan 19	APCH CRS 056°	Rwy ldg 11,201 TDZE Arpt Elev 6
-----------------------------	-------------------------	---

AL-494 [USAF]

HOMESTEAD ARB (KHST)

▼ * When ALS inop, increase vis to 1½ miles.
 ** Circling NA NW of Rwy 6-24.

ALSF-1

MISSED APPROACH: Climb to 800 then climbing right turn to 3000 intercept HST TACAN R-180 to JOMIN and hold.

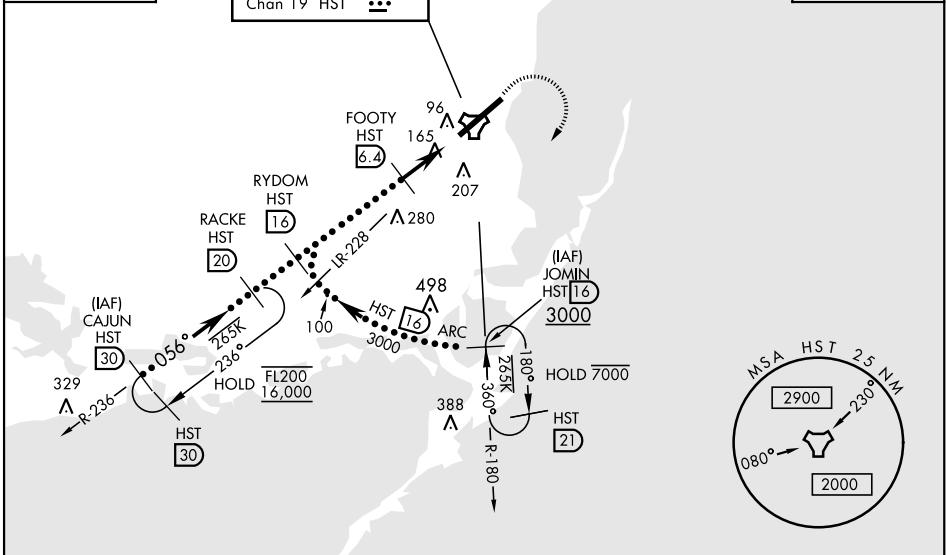
ATIS ★ 132.275 269.9	APP CON 123.8 257.675	TOWER 133.45 279.55	GND CON 121.75 275.8	CLNC DEL 121.75 275.8
--------------------------------	---------------------------------	-------------------------------	--------------------------------	---------------------------------

RACKE HOLDING

CAUTION: Helicopter and stadium 2.2 NM final Rwy 6 at Homestead ARB (stadium may be lit after dark).

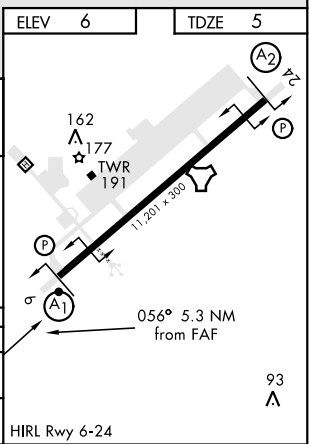
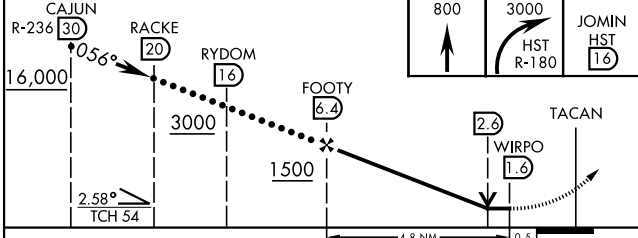
Misled approach requires use of RNAV or ATC RADAR monitoring.

JOMIN HOLDING



ELEV 6	TDZE 5
--------	--------

EMERG SAFE ALT 100 NM 15,100



CATEGORY	C	D	E
S-6 *	460/45	455 (500-7½)	
CIRCLING **	520-1½ 514 (600-1½)	580-2 574 (600-2)	780-2¾ 774 (800-2¾)

HI-TACAN Y RWY 6

SE-3, 07 SEP 2023 to 05 OCT 2023

SE-3, 07 SEP 2023 to 05 OCT 2023