

HOMESTEAD, FLORIDA

ILS or LOC Z RWY 6

LOC I-HST 109.9	APCH CRS 055°	Rwy Idg 11,201 TDZE 5 Arprt Elev 6
---------------------------	-------------------------	---

AL-494 [USAF]

HOMESTEAD ARB (KHST)

RADAR or DME required.

▼ * When ALS inop, increase RVR to 40, vis to ¾ mile.
** When ALS inop, increase CAT AB RVR to 55, vis to 1 mile; CAT CDE RVR to 60, vis to 1 ½ miles.



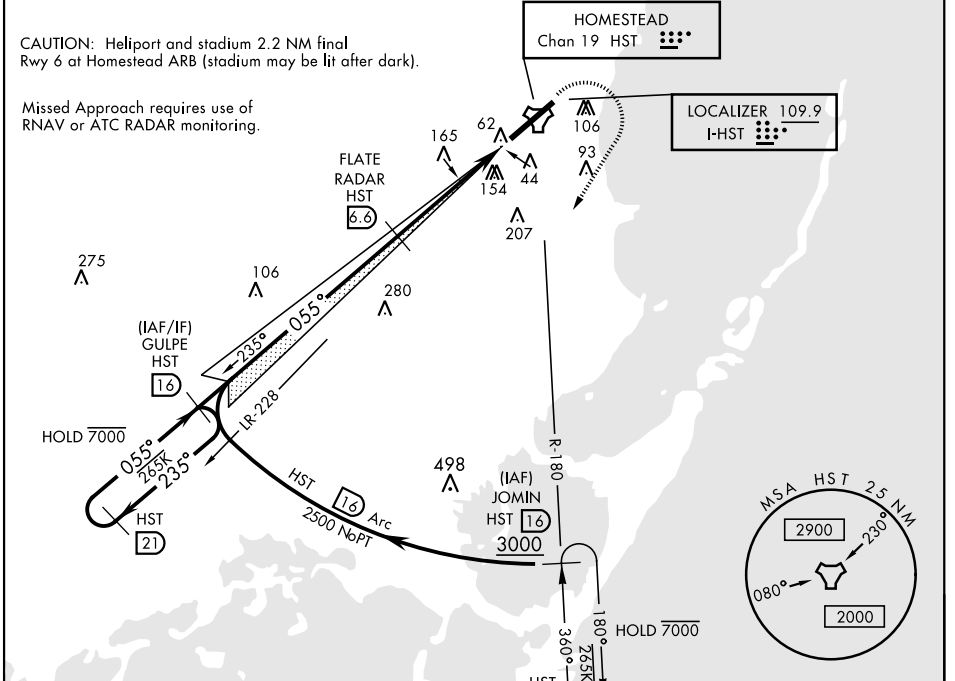
MISSED APPROACH: Climb to 800 then climbing right turn to 3000 intercept HST TACAN R-180 to JOMIN and hold.

ATIS ★ 132.275 269.9	APP CON 123.8 257.675	TOWER 133.45 279.55	GND CON 121.75 275.8	CLNC DEL 121.75 275.8
--------------------------------	---------------------------------	-------------------------------	--------------------------------	---------------------------------

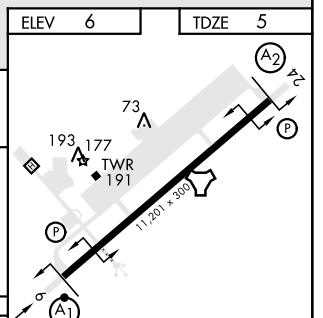
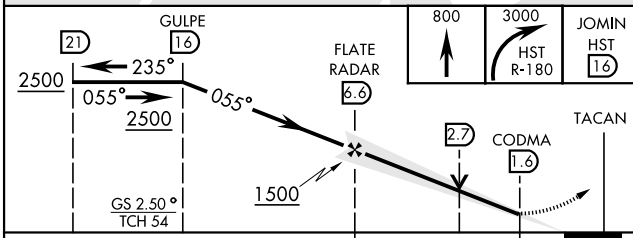
*** Circling NA NW of Rwy 6-24.

CAUTION: Helipond and stadium 2.2 NM final Rwy 6 at Homestead ARB (stadium may be lit after dark).

Misssed Approach requires use of RNAV or ATC RADAR monitoring.



EMERG SAFE ALT 100 NM 15,100



CATEGORY	A	B	C	D	E
S-ILS 6 *	205/24 200 (200-½)				
S-LOC 6 **	460/24 455 (500-½) 460/45 455 (500-¾)				
*** CIRCLING	460-1 454 (500-1)	500-1 494 (500-1)	520-1½ 514 (600-1½)	580-2 574 (600-2)	780-2¾ 774 (800-2¾)

FAF to MAP 5 NM					
Knots	60	90	120	150	180
Min:Sec	5:00	3:20	2:30	2:00	1:40

HOMESTEAD, FLORIDA

25°29'N-80°23'W

HOMESTEAD ARB (KHST)

Amtd 1 30DEC21

ILS or LOC Z RWY 6

SE-3, 07 SEP 2023 to 05 OCT 2023

SE-3, 07 SEP 2023 to 05 OCT 2023