

(LIFRR1.LIFRR) 22139

AL-494 (FAA)

HOMESTEAD ARB (KHST)

LIFRR ONE DEPARTURE (RNAV)

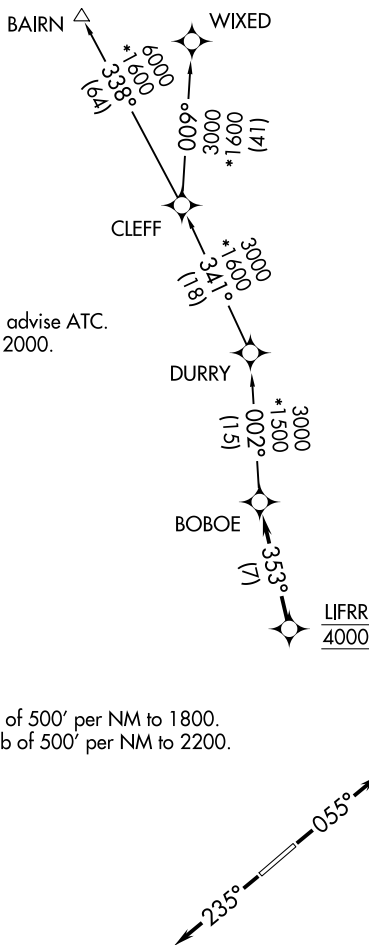
HOMESTEAD, FLORIDA

**TOP ALTITUDE:
ASSIGNED BY ATC**

RNAV 1 - DME/DME/IRU or GPS.

RADAR required.

NOTE: Jet aircraft only.
NOTE: Accelerate to 250K, if unable, advise ATC.
NOTE: For aircraft filed at or below 12000.



ATIS ★
 132.275 269.9
 CLNC DEL
 121.75 275.8
 GND CON
 121.75 275.8
 HOMESTEAD TOWER
 133.45 279.55
 MIAMI DEP CON
 125.5 354.1

TAKEOFF MINIMUMS

Rwy 6: Standard with minimum climb of 500' per NM to 1800.
Rwy 24: Standard with minimum climb of 500' per NM to 2200.

NOTE: Chart not to scale.



DEPARTURE ROUTE DESCRIPTION

TAKEOFF RUNWAY 6: Climb on heading 055° or as assigned by ATC for vectors to cross LIFRR at 4000, thence. . .

TAKEOFF RUNWAY 24: Climb on heading 235° or as assigned by ATC for vectors to cross LIFRR at 4000, thence. . .

. . .on track 353° to BOBOE, then on assigned transition, maintain ATC assigned altitude, expect clearance to filed altitude within 10 minutes after departure.

BAIRN TRANSITION (LIFRR1.BAIRN)
WIXED TRANSITION (LIFRR1.WIXED)

LIFRR ONE DEPARTURE (RNAV)

(LIFRR1.LIFRR) 19MAY22

HOMESTEAD, FLORIDA
HOMESTEAD ARB (KHST)

SE-3, 07 SEP 2023 to 05 OCT 2023

SE-3, 07 SEP 2023 to 05 OCT 2023