

WAAS CH 90405 W22A	APP CRS 219°	Rwy Idg TDZE 2880 Apt Elev 2886
--	------------------------	---

RNAV (GPS) RWY 22

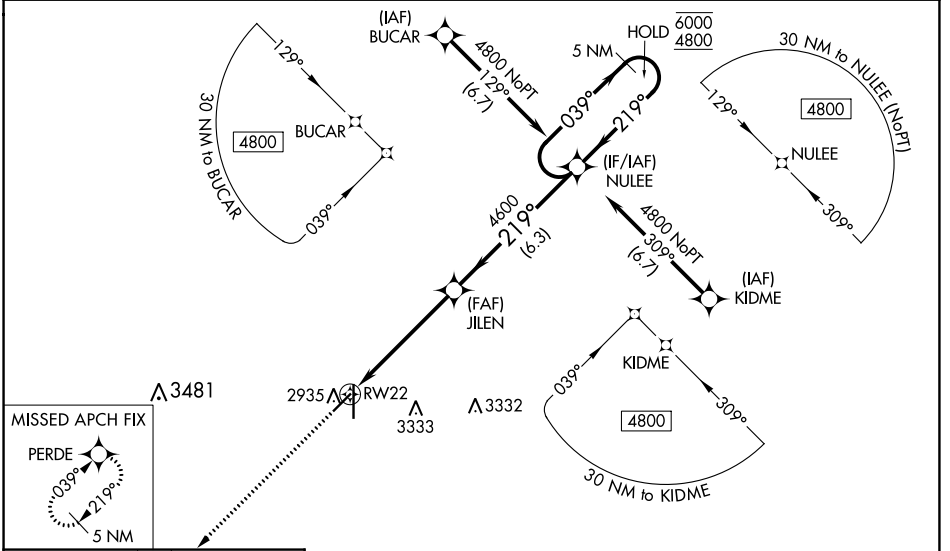
LIBERAL MID-AMERICA RGNL (L.B.L.)

RNP APCH.

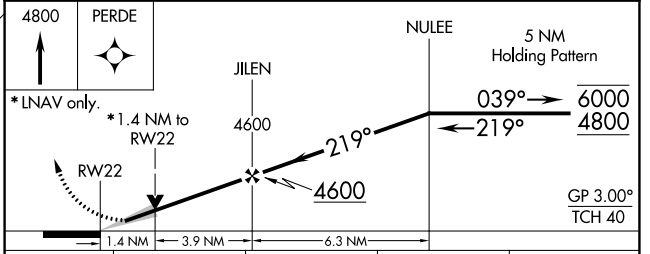
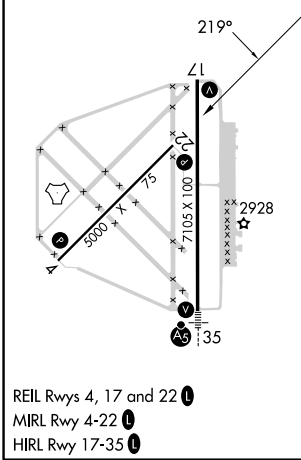
⚠ Circling NA east of Rwy 17-35. Baro-VNAV NA when using Guymon Muni altimeter setting. For uncompensated Baro-VNAV systems, LNAV/VNAV NA below -20°C or above 54°C. VDP NA when using Guymon Muni altimeter setting. When local altimeter setting not received, use Guymon Muni altimeter setting: increase all DA 112 feet and all MDA 120 feet. Increase LPV all Cats visibilities ½ SM; increase LNAV/VNAV all Cats visibility ⅓ SM; increase LNAV Cats C and D visibility ⅓ SM; Circling Cat C and D visibility ¼ SM.

MISSED APPROACH: Climb to 4800 direct PERDE and hold.

AWOS-3PT 118.375	KANSAS CITY CENTER 134.0 257.625	UNICOM 122.8 (CTAF)
----------------------------	--	-------------------------------



ELEV 2886	D	TDZE 2880
-----------	----------	-----------



CATEGORY	A	B	C	D
LPV DA		3080-¾	200 (200-¾)	
LNAV/VNAV DA		3168-⅞	288 (300-⅞)	
LNAV MDA	3360-1	480 (500-1)	3360-1⅓	480 (500-1⅓)
C CIRCLING	3360-1 474 (500-1)	3360-1⅛ 474 (500-1⅛)	3360-1½ 474 (500-1½)	3440-2 554 (600-2)

LIBERAL, KANSAS
Amdt 1A 30JAN20

37°03'N-100°58'W

LIBERAL MID-AMERICA RGNL (L.B.L.) RNAV (GPS) RWY 22

NC-2, 07 SEP 2023 to 05 OCT 2023

NC-2, 07 SEP 2023 to 05 OCT 2023