

WAAS CH <b>63005</b> <b>W35A</b>	APP CRS <b>354°</b>	Rwy Idg TDZE Apt Elev	<b>7105</b> <b>2875</b> <b>2886</b>
--	------------------------	-----------------------------	---

# RNAV (GPS) RWY 35

LIBERAL MID-AMERICA RGNL (L.B.L.)

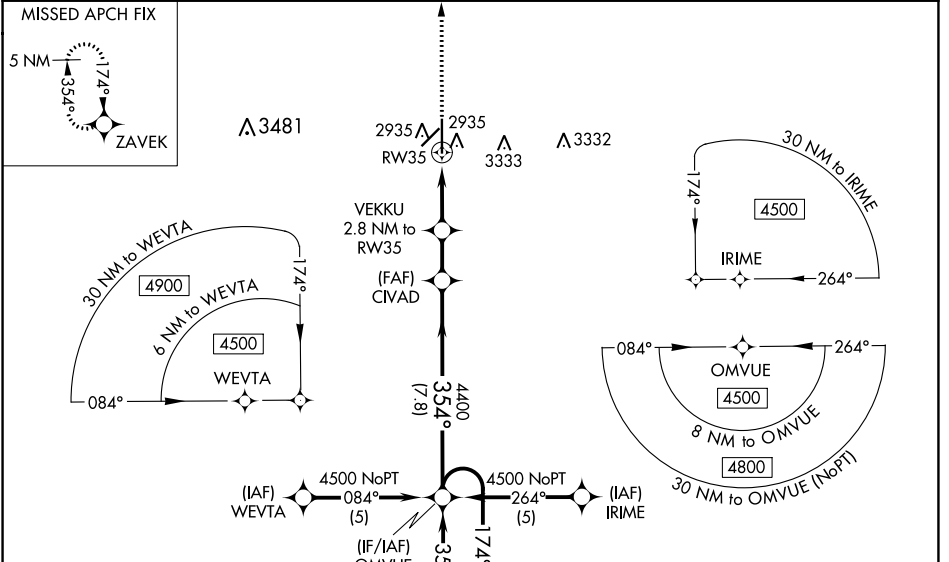
**⚠** Baro-VNAV NA when using Guymon Muni altimeter setting. For uncompensated Baro-VNAV systems, LNAV/VNAV NA below -20°C (-4°F) or above 52°C (125°F). Circling NA east of Rwy 17-35. DME/DME RNP-0.3 NA. VDP NA when using Guymon Muni altimeter setting. When local altimeter setting not received, use Guymon Muni altimeter setting: Increase all DA 112 feet and all MDA 120 feet, increase LNAV Cats C and D visibility 3/8 mile; Circling Cat D visibility 1/4 mile.

MALSR



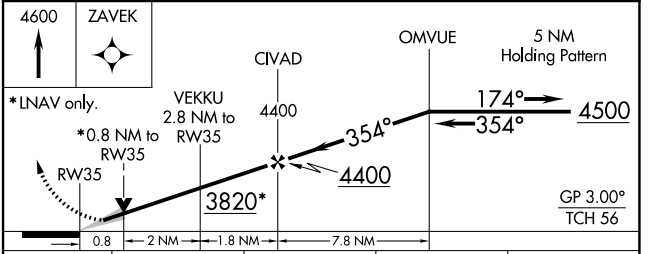
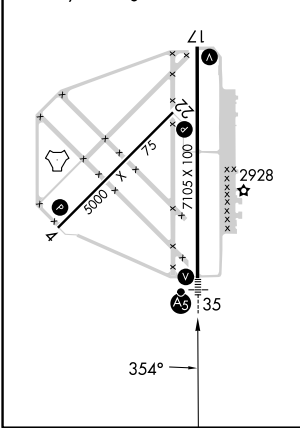
MISSED APPROACH: Climb to 4600 direct ZAVEK and hold.

AWOS-3PT <b>118.375</b>	KANSAS CITY CENTER <b>134.0 257.625</b>	UNICOM <b>122.8 (CTAF) 0</b>
----------------------------	--	---------------------------------



ELEV 2886	<b>D</b>	TDZE 2875
-----------	----------	-----------

REIL Rws 4, 17 and 22  
MIRL Rwy 4-22  
HIRL Rwy 17-35



CATEGORY	A	B	C	D
LPV DA		3075-1/2	200 (200-1/2)	
LNAV/VNAV DA		3125-1/2	250 (300-1/2)	
LNAV MDA		3200-1/2	325 (400-1/2)	
<b>C</b> CIRCLING	3260-1 374 (400-1)	3340-1 454 (500-1)	3340-1 1/2 454 (500-1 1/2)	3440-2 554 (600-2)

NC-2, 07 SEP 2023 to 05 OCT 2023

NC-2, 07 SEP 2023 to 05 OCT 2023