

WAAS CH 72905 W04A	APP CRS 039°	Rwy Idg TDZE Apt Elev	5000 2886 2886
---------------------------------	------------------------	-----------------------------	---

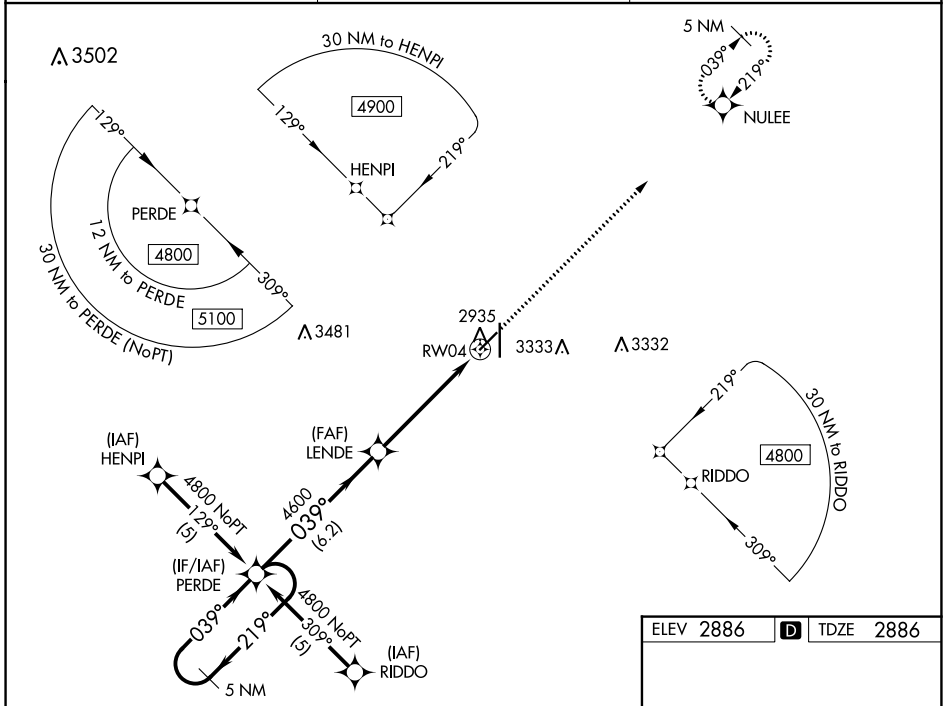
RNAV (GPS) RWY 4

LIBERAL MID-AMERICA RGNL (L.B.L)

⚠ For uncompensated Baro-VNAV systems, LNAV/VNAV NA below -20°C (-4°F) or above 54°C (130°F). Circling NA east of Rwy 17-35. DME/DME RNP-0.3 NA. When local altimeter setting not received, use Guymon Muni altimeter setting: increase all DA 112 feet and all MDA 120 feet: increase all visibilities 3/8 mile. Baro-VNAV NA when using Guymon Muni altimeter setting. VDP NA when using Guymon Muni altimeter setting. Helicopter visibility reduction below 3/4 SM NA.

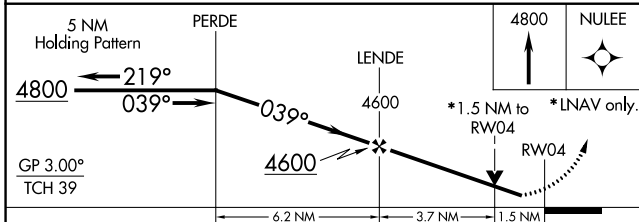
MISSED APPROACH:
Climb to 4800 direct NULEE and hold.

AWOS-3PT 118.375	KANSAS CITY CENTER 134.0 257.625	UNICOM 122.8 (CTAF) Ⓛ
----------------------------	--	---------------------------------

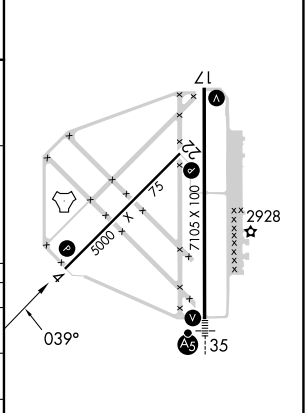


NC-2, 07 SEP 2023 to 05 OCT 2023

NC-2, 07 SEP 2023 to 05 OCT 2023



ELEV 2886	D TDZE 2886
-----------	--------------------



CATEGORY	A	B	C	D
LPV DA		3136-7/8	250 (300-7/8)	
LNAV/VNAV DA		3300-1 3/8	414 (500-1 3/8)	
LNAV MDA	3400-1 514 (600-1)		3400-1 3/8 514 (600-1 3/8)	
C CIRCLING	3400-1 514 (600-1)		3400-1 1/2 514 (600-1 1/2)	3440-2 554 (600-2)

REIL Rws 4, 17 and 22 Ⓛ
MIRL Rwy 4-22 Ⓛ
HIRL Rwy 17-35 Ⓛ