

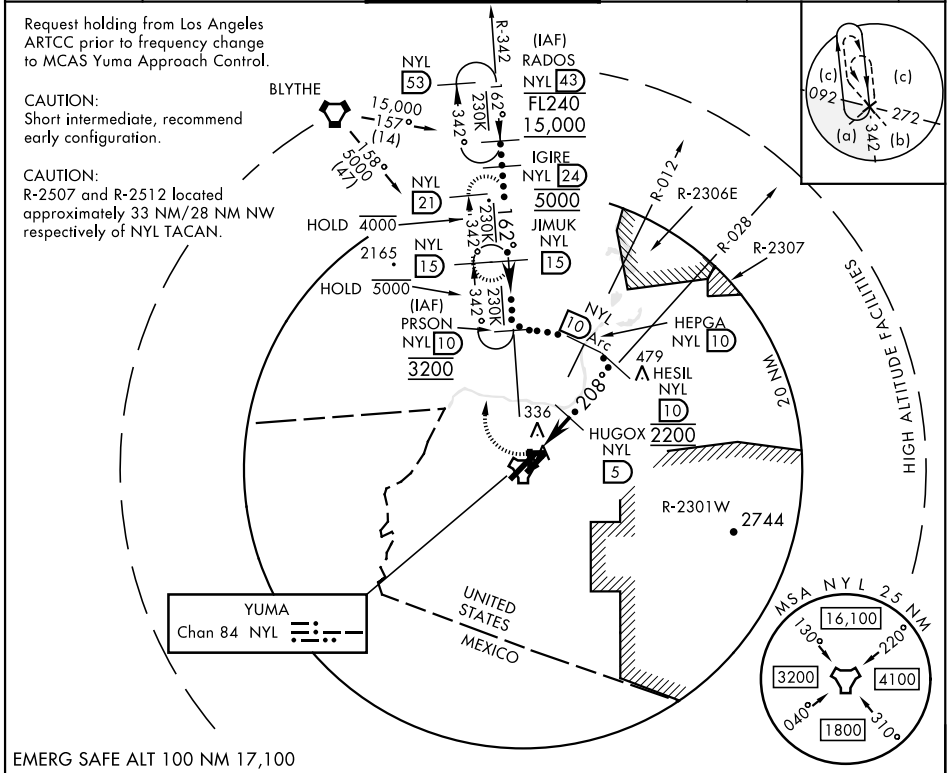
HI-TACAN Z RWY 21R



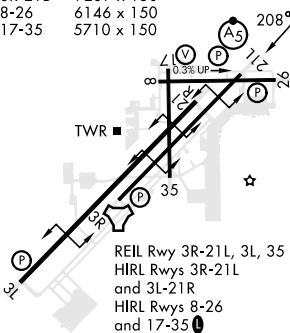
TACAN NYL Chan 84	APCH CRS 208°	Rwy Idg 13,300 TDZE 193 Arprt Elev 213	AL-511 [UNSN]	YUMA MCAS/YUMA INTL (KNYL)
-----------------------------	-------------------------	---	---------------	----------------------------

▼ * When ALS inop, increase vis to 1½ miles.


 MISSED APPROACH: Climbing right turn to 4000 intercept NYL TACAN R-342 to JIMUK and hold, continue climb-in-hold to 4000.

ATIS★ 118.8 273.5	APP CON 124.7 371.975	TOWER★ 119.3 (CTAF) 0 377.075	GND CON 121.9 314.0	CLNC DEL 118.0 336.4	ASR/ PAR
-----------------------------	---------------------------------	---	-------------------------------	--------------------------------	-------------



 4000 NYL R-342	 JIMUK NYL 15	RADOS R-342 FL240 15,000	ELEV 213	TDZE 193
TACAN HOBMA 1.3 2.4 HUGOX 5 1500 3.4 NM		PRSON R-342 10 HEPGA R-012 10 HESIL R-028 10 JIMUK 15 IGIRE 24 4000 5000 162° 3200 2700 2200 10 Arc 3.12° TCH 50	3L-21R 13,300 x 200 3R-21L 9239 x 150 8-26 6146 x 150 17-35 5710 x 150	 TWR REIL Rwy 3R-21L, 3L, 35 HIRL Rwys 3R-21L and 3L-21R HIRL Rwys 8-26 and 17-35
CATEGORY	C	D	E	
S-21R*	640-7/8	447	(500-7/8)	
CIRCLING	800-1½ 587 (600-1½)	800-2 587 (600-2)		

HI-TACAN Z RWY 21R

SW-4, 07 SEP 2023 to 05 OCT 2023

SW-4, 07 SEP 2023 to 05 OCT 2023