

YUMA, ARIZONA

ILS or LOC/DME RWY 21R

LOC I-YUM 108.3	APCH CRS 213°	Rwy Ldg 21L 9239 21R 13,300 TDZE 21L 208 21R 193 Arpt Elev 213
---------------------------	-------------------------	---

AL-511 [USN] YUMA MCAS/YUMA INTL (KNYL)

VOR required.



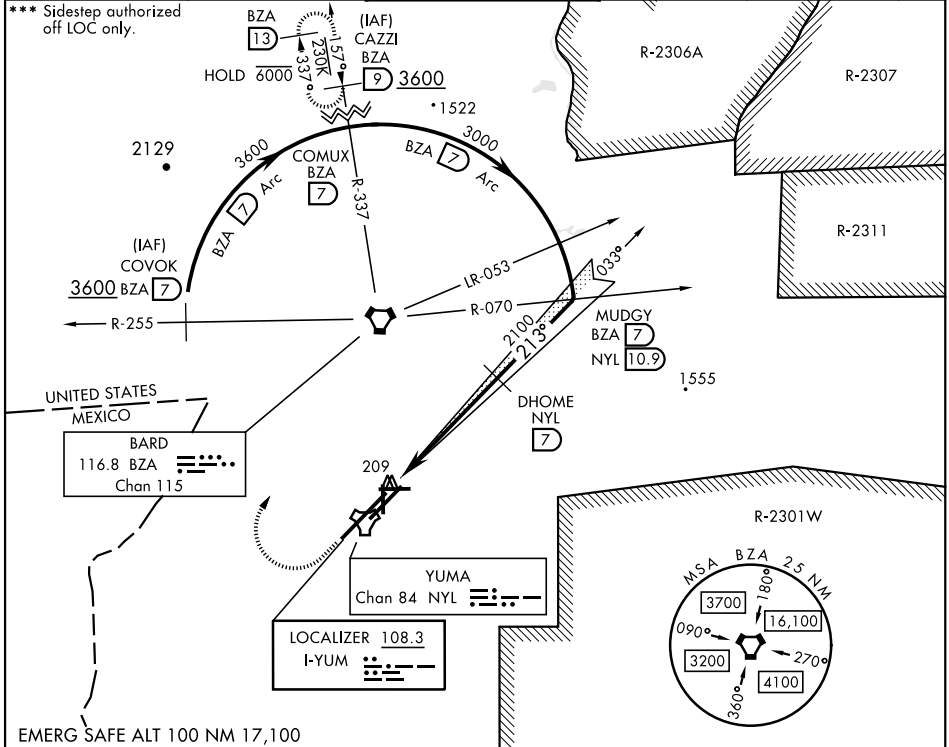
MISSED APPROACH: Climb to 900, then climbing right turn to 3600 direct BZA VORTAC and BZA R-337 to CAZLI and hold.

* When ALS inop, increase vis to 3/4 mile.

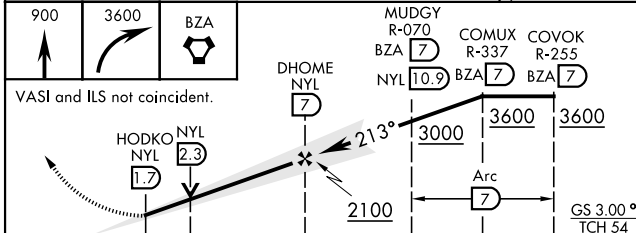
** When ALS inop, increase CAT AB vis to 1 mile, CAT CD vis to 1 1/8 miles.

ATIS ★ 118.8 273.5	APP CON 124.7 371.975	TOWER ★ 119.3 (CTAF) 0 377.075	GND CON 121.9 314.0	CLNC CAZLI 118.0 336.4	ASR/PAR
------------------------------	---------------------------------	--	-------------------------------	----------------------------------	---------

*** Sidestep authorized off LOC only.

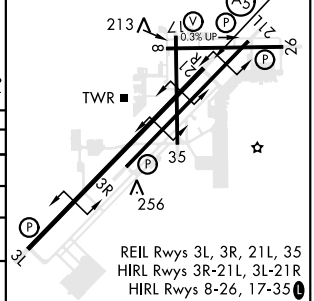


EMERG SAFE ALT 100 NM 17,100



ELEV 213	TDZE 21L 208
3L-21R 13,300 x 200	TDZE 21R 193
3R-21L 9239 x 150	
8-26 6146 x 150	
17-35 5710 x 150	

CATEGORY	A	B	C	D
S-ILS 21R *	393-1/2		200	(200-1/2)
S-LOC 21R **	600-1/2	407 (400-1/2)	600-3/4	407 (400-3/4)
SIDESTEP ***	600-1	392 (400-1)	600-1 1/8	392 (400-1 1/8)
CIRCLING	680-1 467 (500-1)	700-1 487 (500-1)	800-1 1/2 587 (600-1 1/2)	800-2 587 (600-2)



REIL Rwy 3L, 3R, 21L, 35
HIRL Rwy 3R-21L, 3L-21R
HIRL Rwy 8-26, 17-35

YUMA, ARIZONA
Amdt 6 22APR21

32° 39' N - 114° 36' W

YUMA MCAS/YUMA INTL (KNYL)

ILS or LOC/DME RWY 21R

SW-4, 07 SEP 2023 to 05 OCT 2023

SW-4, 07 SEP 2023 to 05 OCT 2023