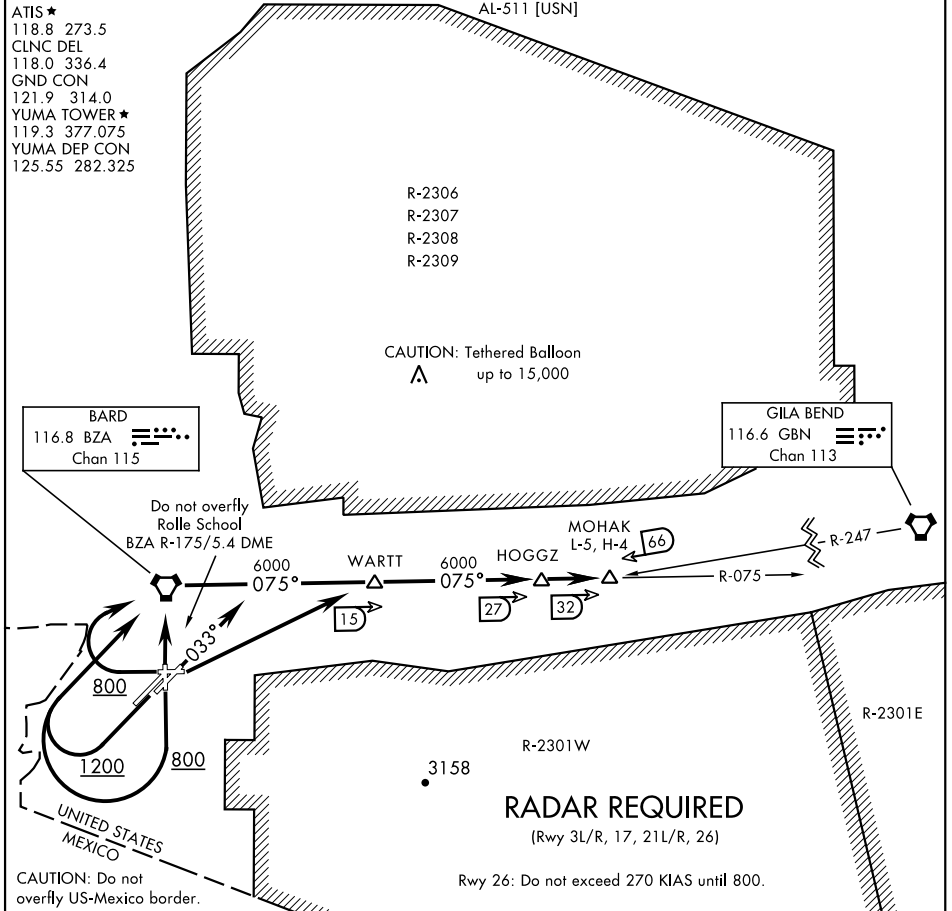


MOHAK FIVE DEPARTURE (MOHAK5•MOHAK)

YUMA MCAS/YUMA INTL (KNYL)

YUMA, ARIZONA



SW-4, 07 SEP 2023 to 05 OCT 2023

SW-4, 07 SEP 2023 to 05 OCT 2023

CAUTION: Do not overfly US-Mexico border.

Rwy 26: Do not exceed 270 KIAS until 800.

DEPARTURE ROUTE DESCRIPTION

TAKE-OFF RWY 3L/R: Climb hdg 033°, then RADAR vectors to intercept BZA VORTAC R-075. Thence...

TAKE-OFF RWY 8: Climbing left turn direct WARTT. Thence...

TAKE-OFF RWY 17: Climb to 800, then climbing right turn direct BZA VORTAC. Thence...

TAKE-OFF RWY 21L/R: Climb to 1200, then climbing right turn direct BZA VORTAC. Thence...

TAKE-OFF RWY 26: Climb to 800, then climbing right turn direct BZA VORTAC. Do not exceed 270 KIAS until 800.

TAKE-OFF RWY 35: Climb direct BZA VORTAC. Thence....

...via BZA R-075 to MOHAK INT via HOGGZ INT. Then via assigned route. Maintain assigned altitude. Expect clearance to filed altitude/flight level 10 minutes after departure.

MOHAK FIVE DEPARTURE (MOHAK5•MOHAK)

Orig 22APR21

YUMA, ARIZONA

YUMA MCAS/YUMA INTL (KNYL)