

YUMA, ARIZONA

RNAV (GPS) RWY 3L

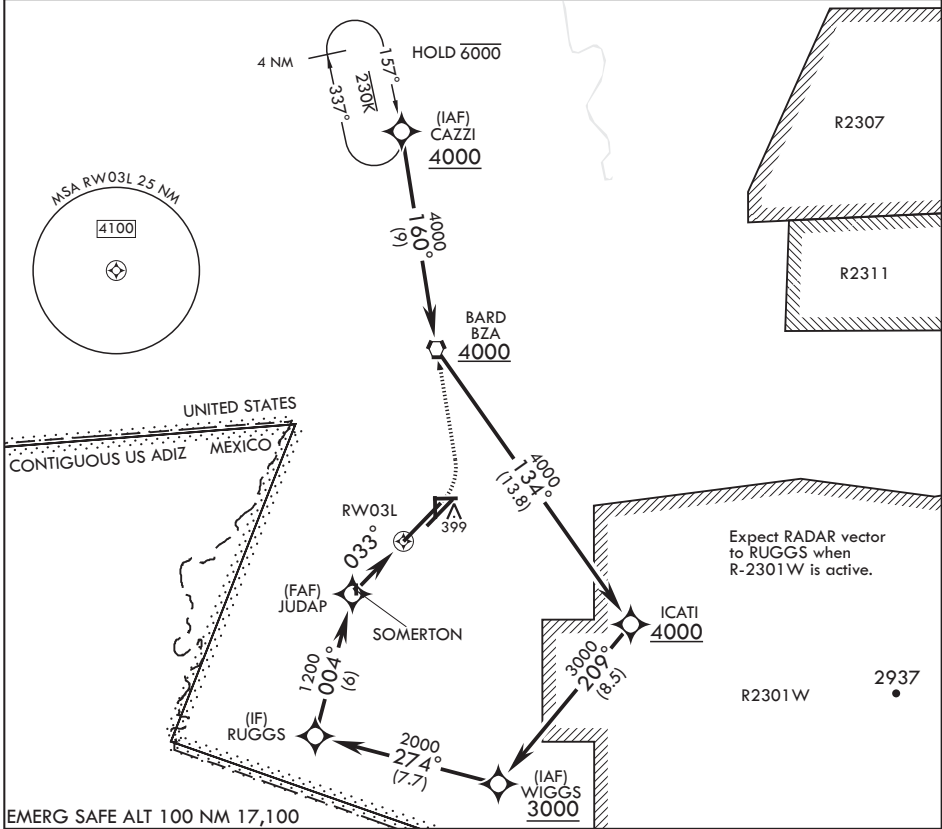
APCH CRS	Rwy Idg	13,300
033°	TDZE	195
	Arprt Elev	213

AL-511 (USN)

YUMA MCAS YUMA INTL (KNYL)

RNP APCH	MISSED APPROACH: Climb to 1000, then climbing left turn to 4000 direct CAZZI and hold. Continue climb in hold to 4000.
----------	--

ATIS★	APP CON	TOWER★	GND CON	CLNC DEL	ASR/PAR
118.8 273.5	124.7 371.975	119.3 (CTAF) 0 377.075	121.9 314.0	118.0 336.4	



RUGGS	2000	004°	JUDAP	1200	033°	1 NM to RW03L	RW03L
						3.00° TCH 54	
						3 NM	
CATEGORY	A	B	C	D			
LNAV MDA	560-1	365	(400-1)				
☐ CIRCLING	680-1 467 (500-1)	700-1 487 (500-1)	800-1½ 587 (600-1½)	800-2 587 (600-2)			

1000	4000	CAZZI	ELEV 213	TDZE 195
------	------	-------	----------	----------

283 6146 x 150 0.3% UP

258

354

TWR

5710 x 150

35

399 BCN

13,300 x 200

9239 x 150

338

240

238

033°

REIL Rwy 3L, 3R, 21L, 35

HIRL Rwy 8-26, 17-35

HIRL Rwy 3L-21R, 3R-21L

YUMA, ARIZONA
Amdt 4 22APR21

32°39'N - 114°36'W

YUMA MCAS YUMA INTL (KNYL)

RNAV (GPS) RWY 3L

SW-4, 07 SEP 2023 to 05 OCT 2023

SW-4, 07 SEP 2023 to 05 OCT 2023