

YUMA, ARIZONA

TACAN Y RWY 3L

YUMA MCAS/YUMA INTL (KNYL)

TACAN NYL Chan 84	APCH CRS 039°	Rwy Ildg 13,300 TDZE 195 Arprt Elev 213
-----------------------------	-------------------------	--

AL-511 [USN]

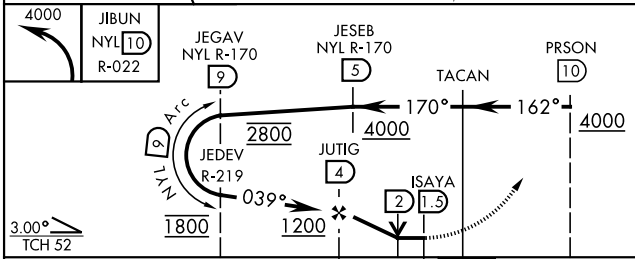
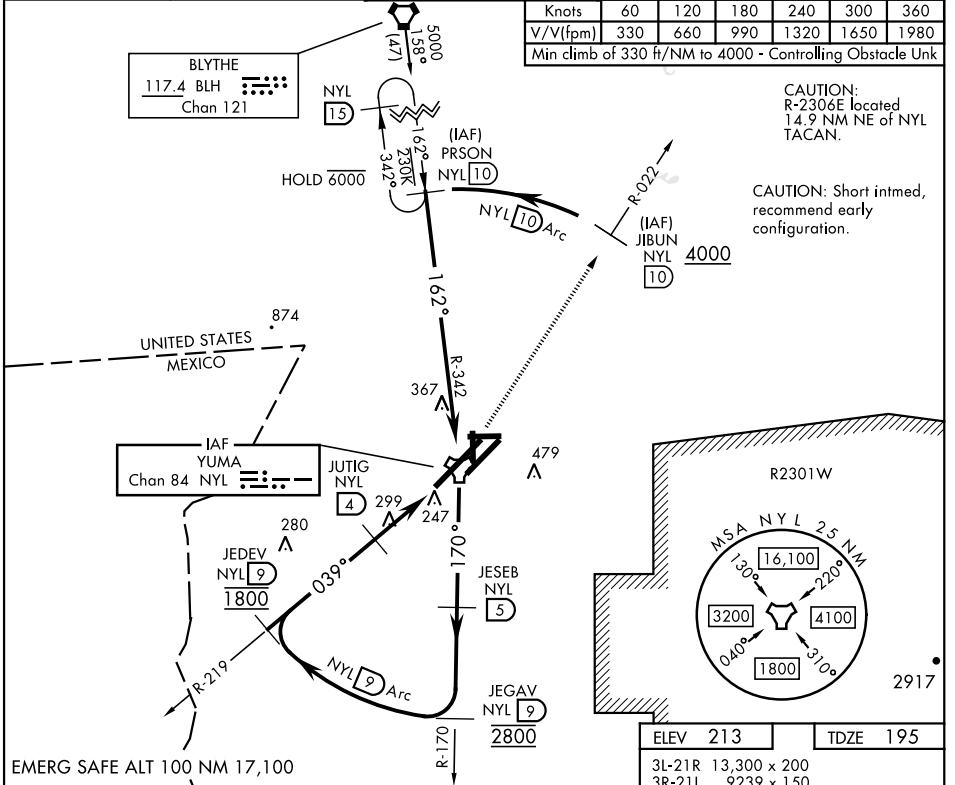
MISSED APPROACH: Climbing left turn to 4000, intercept NYL TACAN R-022 to JIBUN, cross JIBUN at or above 4000.

ATIS ★ 118.8 273.5	APP CON 124.7 371.975	TOWER ★ 119.3 (CTAF) 0 377.075	GND CON 121.9 314.0	CLNC DEL 118.0 336.4	ASR/ PAR
------------------------------	---------------------------------	--	-------------------------------	--------------------------------	-------------

Knots	60	120	180	240	300	360
V/V (fpm)	330	660	990	1320	1650	1980
Min climb of 330 ft/NM to 4000 - Controlling Obstacle Unk						

CAUTION:
R-2306E located
14.9 NM NE of NYL
TACAN.

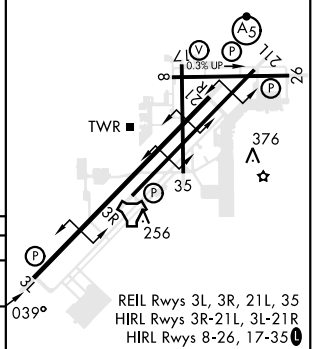
CAUTION: Short intmd,
recommend early
configuration.



ELEV 213	TDZE 195
----------	----------

3L-21R	13,300 x 200
3R-21L	9239 x 150
8-26	6146 x 150
17-35	5710 x 150

CATEGORY	A	B	C	D
S-3L		560-1	365 (400-1)	
CIRCLING	680-1 467 (500-1)	700-1 487 (500-1)	800-1½ 587 (600-1½)	800-2 587 (600-2)



YUMA, ARIZONA
Amdt 5 22APR21

32°39'N-114°36'W

YUMA MCAS/YUMA INTL (KNYL)

TACAN Y RWY 3L

SW-4, 07 SEP 2023 to 05 OCT 2023

SW-4, 07 SEP 2023 to 05 OCT 2023