

WAAS CH 90421 W36A	APP CRS 004°	Rwy ldg 5497 TDZE 384 Apt Elev 422
--	------------------------	---

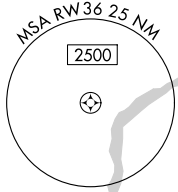
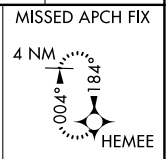
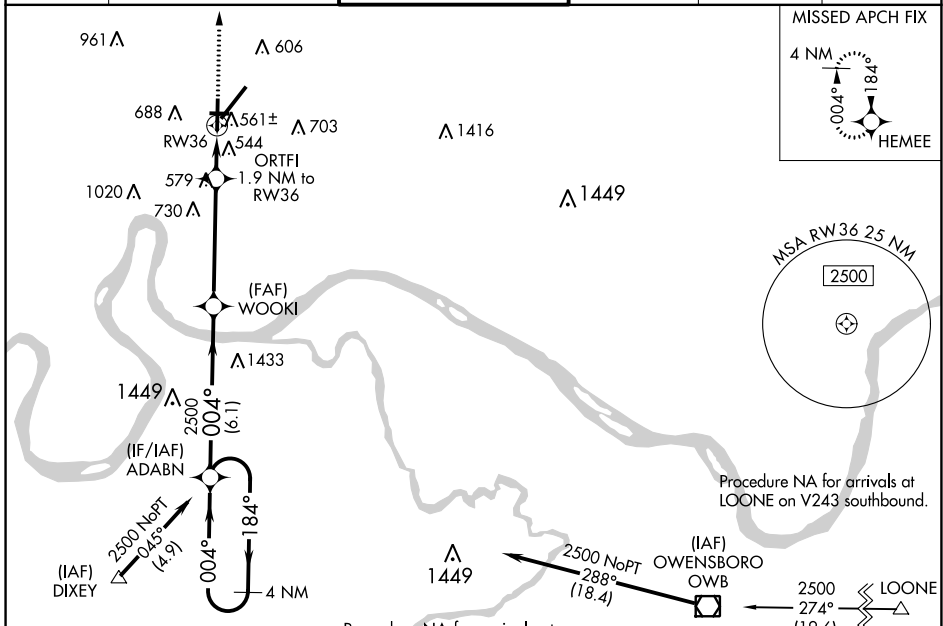
RNAV (GPS) RWY 36

EVANSVILLE RGNL (EVV)

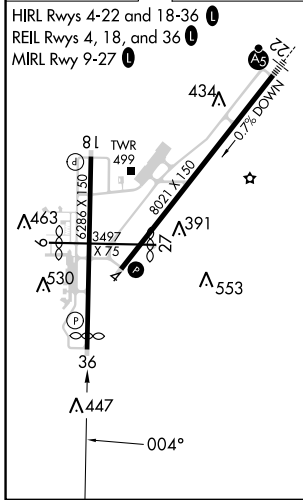
ASR For uncompensated Baro-VNAV systems, LNAV/VNAV NA below -15°C (5°F) or above 54°C (130°F). DME/DME RNP-0.3 NA. Circling Rwy 9 NA at night. Helicopter visibility reduction below 3/4 SM NA.

MISSED APPROACH: Climb to 2500 direct HEMEE and hold.

ATIS 120.2	EVANSVILLE APP CON ★ 124.025 290.9	EVANSVILLE TOWER ★ 118.7 (CTAF) 257.8	GND CON 121.9	CLNC DEL 126.6	UNICOM 122.95
----------------------	--	---	-------------------------	--------------------------	-------------------------

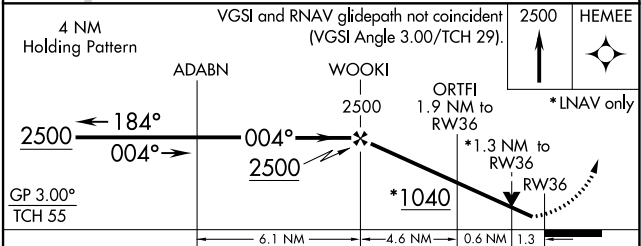


ELEV 422	D	TDZE 384
-----------------	----------	-----------------



Procedure NA for arrivals at LOONE on V243 southbound.

Procedure NA for arrivals at DIXEY on V7-52 southeast bound.



CATEGORY	A	B	C	D
LPV DA		634-3/4	250 (300-3/4)	
LNAV/VNAV DA		891-13/4	507 (500-13/4)	
LNAV MDA	820-1	436 (500-1)	820-1 1/4	436 (500-1 1/4)
C CIRCLING	920-1 498 (500-1)	1040-1 618 (700-1)	1040-1 3/4 618 (700-1 3/4)	1040-2 618 (700-2)

EC-2, 07 SEP 2023 to 05 OCT 2023

EC-2, 07 SEP 2023 to 05 OCT 2023