

WAAS CH 99715 W12A	APP CRS 116°	Rwy Idg TDZE Apt Elev	6508 15 15
--	------------------------	-----------------------------	---------------------------------------

RNAV (GPS) RWY 12

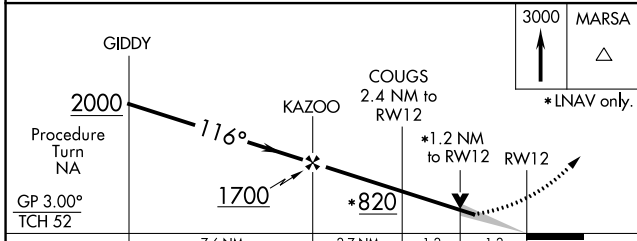
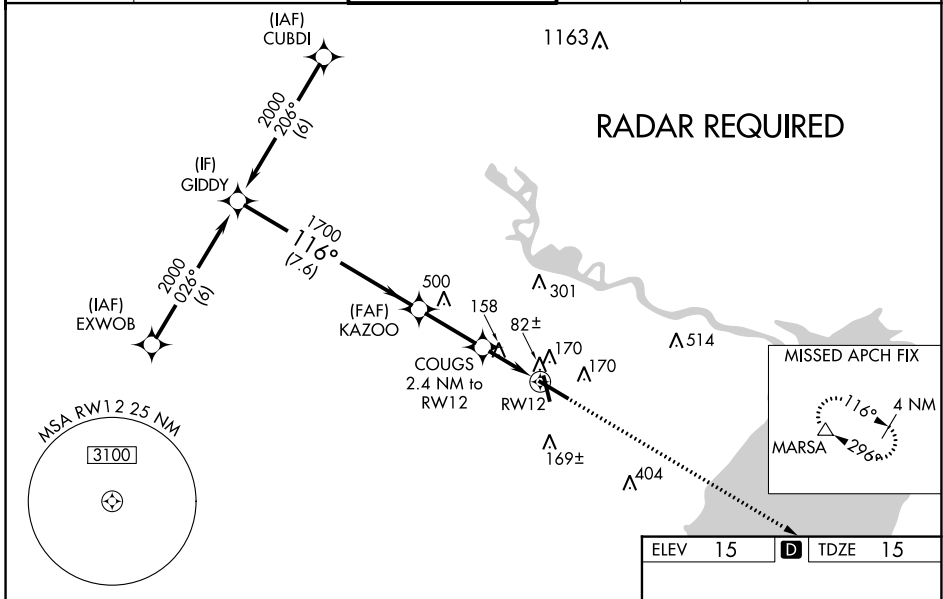
JACK BROOKS RGNL (BPT)

▼ Baro-VNAV NA when using Orange County altimeter setting. For uncompensated Baro-VNAV systems, LNAV/VNAV NA below -15°C (5°F) or above 49°C (120°F). DME/DME RNP-0.3 NA. When local altimeter setting not received, use Orange County altimeter setting and increase LPV DA to 247 feet, LNAV/VNAV DA to 407 feet and all MDA 40 feet; increase LNAV/VNAV and LNAV Cat E visibility ¼ SM. For inoperative MALSRS, increase LPV Cat E visibility to RVR 4000, LNAV/VNAV Cat E to RVR 6000 and LNAV Cat E to 1½ miles. For inoperative MALSRS when using Orange County altimeter setting, increase LPV Cat E visibility to RVR 4000, LNAV/VNAV Cat E to 1½ miles, and LNAV Cat E to 1¾ miles. YDP NA when using Orange County altimeter setting. **RVR 1800 authorized with use of FD or AP or HUD to DA (NA when using Orange County altimeter setting).

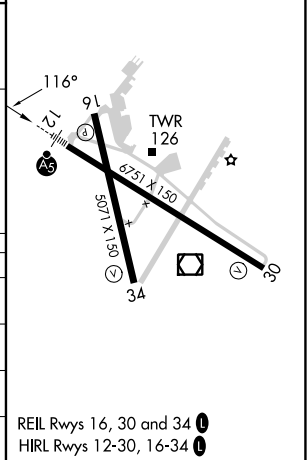
MALSRS

MISSED APPROACH:
Climb to 3000 direct MARSAs and hold.

ATIS 126.3	HOUSTON APP CON 121.3 377.1	BEAUMONT TOWER* 119.5 (CTAF) 0	GND CON 124.85	CLNC DEL 118.3	UNICOM 122.95
----------------------	---------------------------------------	---	--------------------------	--------------------------	-------------------------



ELEV 15	D	TDZE 15
---------	----------	---------



CATEGORY	A	B	C	D	E
LPV DA **	215/24		200 (200-½)		
LNAV/VNAV DA	375/40		360 (400-¾)		
LNAV MDA	460/24	445 (500-½)	460/40 445 (500-¾)	460/50	445 (500-1)
CIRCLING	480-1 465 (500-1)	840-1¼ 825 (900-1¼)	840-2½ 825 (900-2½)	840-2¾ 825 (900-2¾)	840-3 825 (900-3)

SC-5, 07 SEP 2023 to 05 OCT 2023

SC-5, 07 SEP 2023 to 05 OCT 2023