

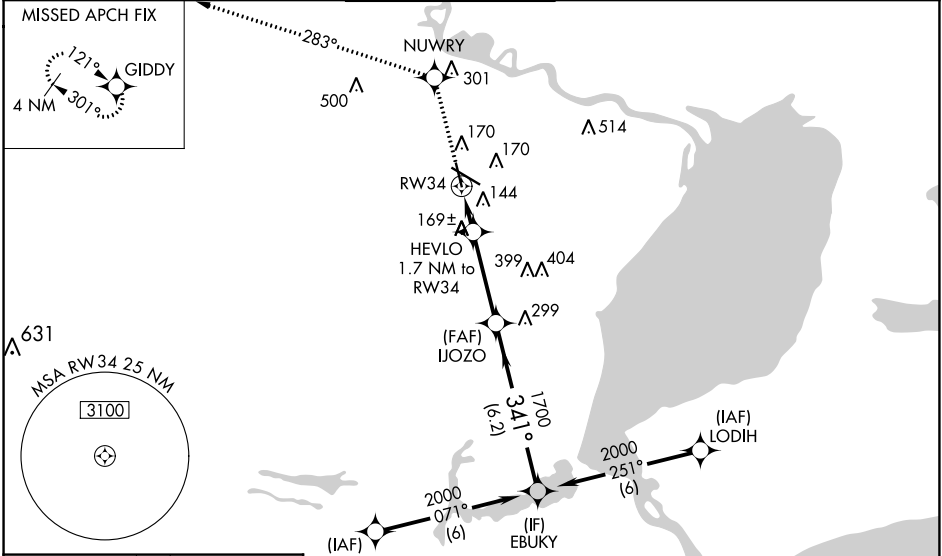
WAAS CH 72616 W34A	APP CRS 341°	Rwy Idg TDZE Apt Elev	5070 15 15
--	------------------------	-----------------------------	---------------------------------------

RNAV (GPS) RWY 34

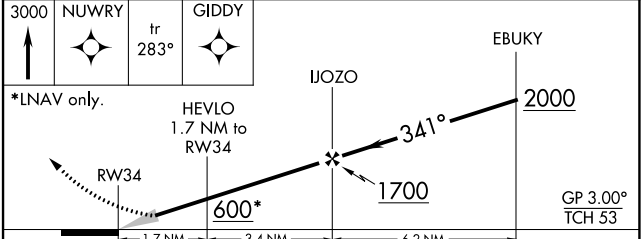
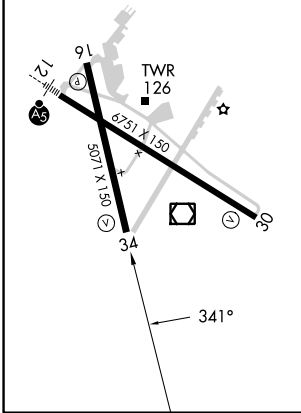
JACK BROOKS RGNL (BPT)

RNP APCH.	<p>MISSED APPROACH: Climb to 3000 direct NUWRY and via track 283° to GIDDY and hold.</p>
<p>RADAR required.</p> <p>Baro-VNAV NA when using Orange County altimeter setting. For uncompensated Baro-VNAV systems, LNAV/VNAV NA below -15°C (5°F) or above 49°C (120°F). When local altimeter setting not received, use Orange County altimeter setting; increase LPV DA to 247 feet; increase LNAV/VNAV DA to 469 feet; increase LNAV Cat C visibility ¼ SM.</p>	

ATIS 126.3	HOUSTON APP CON 121.3 377.1	BEAUMONT TOWER* 119.5 (CTAF)	GND CON 124.85	CLNC DEL 118.3	UNICOM 122.95
----------------------	---------------------------------------	--	--------------------------	--------------------------	-------------------------



ELEV 15	D	TDZE 15
REIL Rwy 16, 30 and 34		
HIRL Rwy 12-30, 16-34		



CATEGORY	A	B	C	D	E
LPV DA	215-¾ 200 (200-¾)				
LNAV/VNAV DA	437-1½ 422 (500-1½)				
LNAV MDA	480-1	465 (500-1)	480-1¼ 465 (500-1¼)	480-1½ 465 (500-1½)	480-1¾ 465 (500-1¾)

SC-5, 07 SEP 2023 to 05 OCT 2023

SC-5, 07 SEP 2023 to 05 OCT 2023