

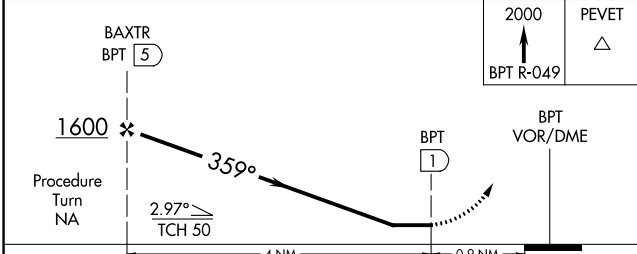
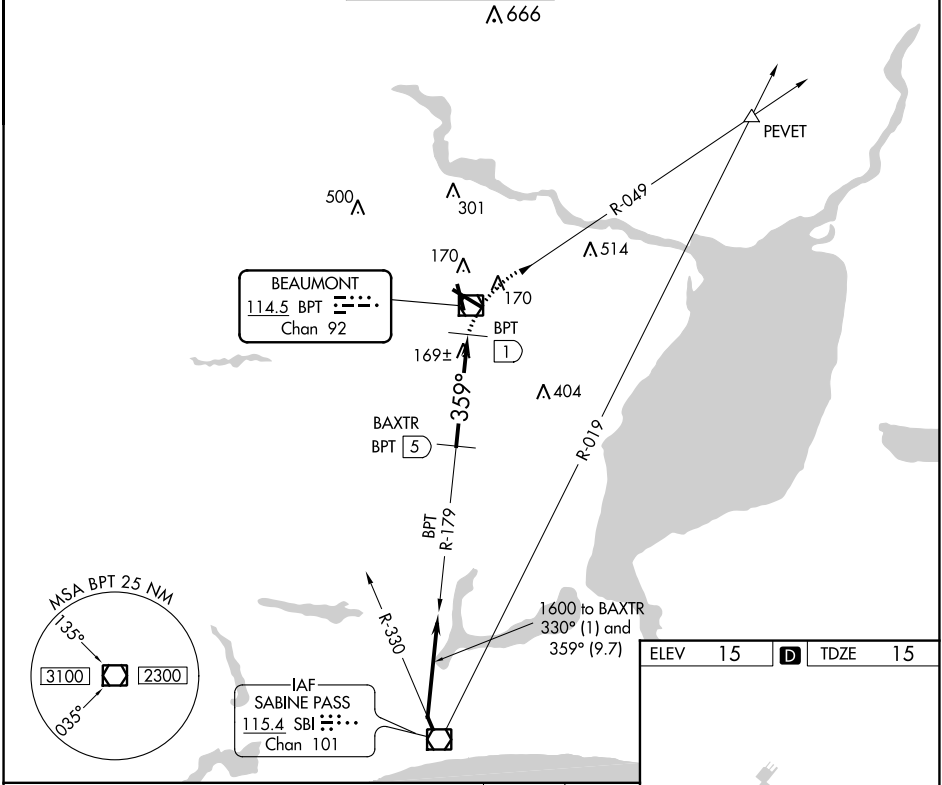
VOR/DME BPT 114.5 Chan 92	APP CRS 359°	Rwy Idg 5070 TDZE 15 Apt Elev 15
---	------------------------	---

VOR/DME RWY 34

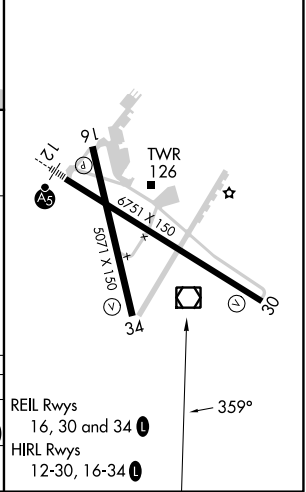
JACK BROOKS RGNL (BPT)

▼ When local altimeter setting not received, use Orange County altimeter setting and increase all MDA 40 feet, increase S-34 visibility Cat C and D ¼ SM.
▲ MISSED APPROACH: Climb to 2000 via BPT VOR/DME R-049 to PEVET INT.

ATIS 126.3	HOUSTON APP CON 121.3 377.1	BEAUMONT TOWER* 119.5 (CTAF) 0	GND CON 124.85	CLNC DEL 118.3	UNICOM 122.95
----------------------	---------------------------------------	--	--------------------------	--------------------------	-------------------------



ELEV 15	D	TDZE 15
---------	----------	---------



CATEGORY	A	B	C	D	E
S-34	500-1¼	485 (500-1¼)		500-1½ 485 (500-1½)	500-1¾ 485 (500-1¾)
CIRCLING	500-1¼ 485 (500-1¼)	840-1½ 825 (900-1½)	840-2½ 825 (900-2½)	840-2¾ 825 (900-2¾)	840-3 825 (900-3)

SC-5, 07 SEP 2023 to 05 OCT 2023

SC-5, 07 SEP 2023 to 05 OCT 2023