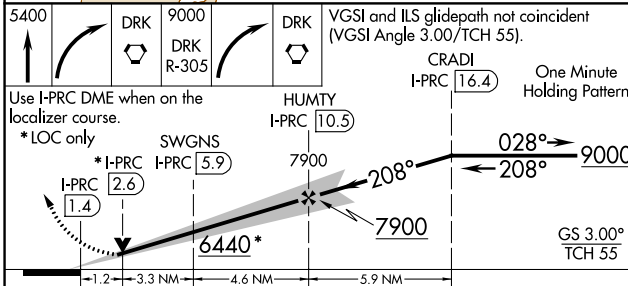
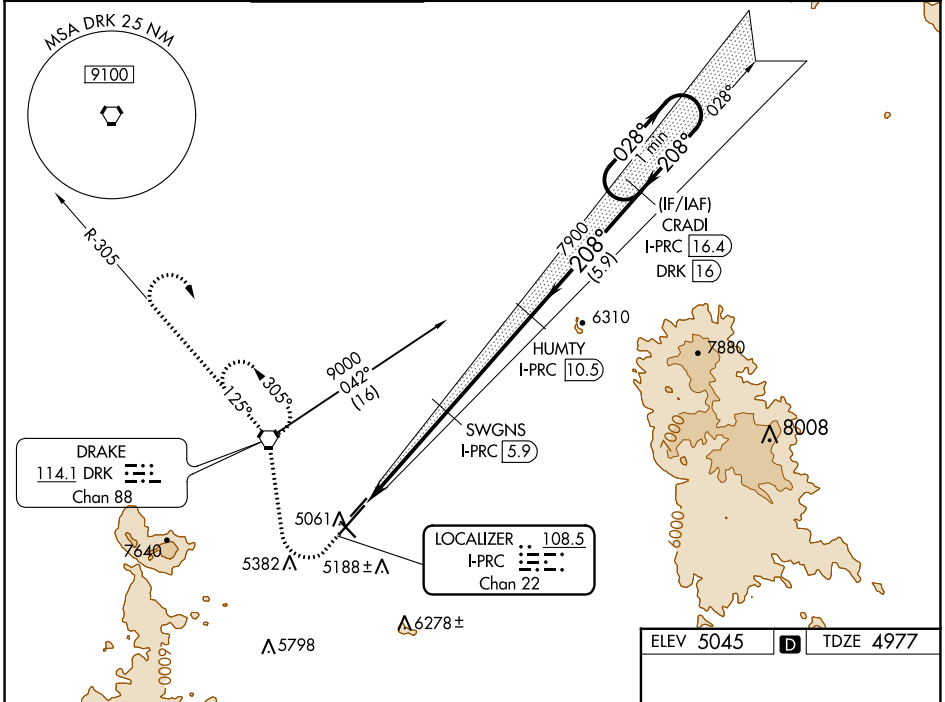


LOC/DME I-PRC <b>108.5</b> Chan 22	APP CRS <b>208°</b>	Rwy Idg TDZE Apt Elev	<b>7619</b> <b>4977</b> <b>5045</b>
--	------------------------	-----------------------------	---

# ILS or LOC/DME RWY 21L

PRESCOTT RGNL-ERNEST A LOVE FLD (PRC)

<p>Circling Rwy 3L, 12, 30 NA at night.</p>		<p>MALSR</p> <p>MISSED APPROACH: Climb to 5400 then climbing right turn direct DRK VORTAC and DRK VORTAC R-305 to 9000, then right turn direct DRK VORTAC and hold.</p>				
ATIS <b>127.2</b>	PHOENIX APP CON <b>133.575 281.55</b>	PRESCOTT TOWER * <b>125.3</b> (CTAF) <b>257.9</b>	GND CON <b>121.7</b>	CNLC DEL <b>119.25</b>	<b>128.75</b> (12-30) <b>125.3</b> (CTAF) (3R-21L)	UNICOM <b>122.95</b>



ELEV 5045	D	TDZE 4977
-----------	---	-----------

MIRL Rwy 3L-21R and 3R-21L  
MIRL Rwy 12-30  
REIL Rwy 3R, 12, and 30L

CATEGORY	A	B	C	D
S-ILS 21L	5177-1/2		200 (200-1/2)	
S-LOC 21L	5380-1/2	403 (400-1/2)	5380-3/4	403 (400-3/4)
CIRCLING	5540-1 495 (500-1)	5760-1 715 (800-1)	6080-3 1035 (1100-3)	6680-3 1635 (1700-3)