

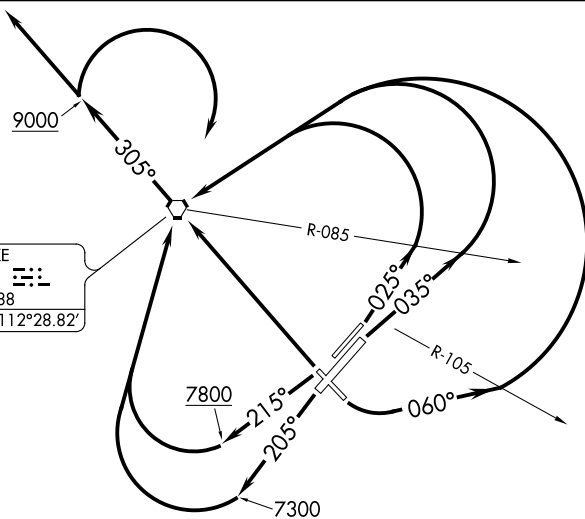
PRESCOTT THREE DEPARTURE (OBSTACLE)

AL-546 (FAA)

PRESCOTT, ARIZONA

ATIS
127.2
CLNC DEL
119.25
GND CON
121.7
PRESCOTT TOWER ★
125.3 (CTAF) 257.9
PHOENIX DEP CON
133.575 281.55
ALBUQUERQUE CENTER
128.45 298.9

DRAKE	
114.1 DRK	
Chan 88	
N34°42.15'-W112°28.82'	



TAKEOFF MINIMUMS

Rwys 3L/R, 30: Standard.

Rwy 12: Standard with a minimum climb of 260' per NM to 5700 or 600-2¾ with a minimum climb of 245' per NM to 5600 or 1800-3 for VCOA.

Rwy 21L: Standard with a minimum climb of 430' per NM to 8200 or 1800-3 for VCOA.

Rwy 21R: Standard with a minimum climb of 500' per NM to 8800 or 1800-3 for VCOA.

(NOTES CONTINUED ON FOLLOWING PAGE)

NOTE: Chart not to scale.

DEPARTURE ROUTE DESCRIPTION

TAKEOFF RUNWAY 3L: Climb heading 025° until crossing DRK VORTAC R-085, then climbing left turn direct DRK VORTAC, thence. . . .

TAKEOFF RUNWAY 3R: Climb heading 035° until crossing DRK VORTAC R-085, then climbing left turn direct DRK VORTAC, thence. . . .

TAKEOFF RUNWAY 12: Climb heading 060° until crossing DRK VORTAC R-105, then climbing left turn direct DRK VORTAC, thence. . . .

TAKEOFF RUNWAY 21L: Climb heading 205° until 7300, then climbing right turn direct DRK VORTAC, thence. . . .

TAKEOFF RUNWAY 21R: Climb heading 215° until 7800, then climbing right turn direct DRK VORTAC, thence. . . .

TAKEOFF RUNWAY 30: Climb direct DRK VORTAC, thence. . . .

. . . .climb on DRK VORTAC R-305 to 9000. Aircraft departing on DRK VORTAC R-305 continue climbing on course. All other aircraft climbing right turn direct DRK VORTAC then on assigned course.

VCOA RUNWAYS 12, 21L/R: Obtain ATC approval for VCOA when requesting IFR clearance. Climb in visual conditions to cross Prescott Airport at or above 6700 direct DRK VORTAC, then climb on DRK VORTAC R-305 to 9000. Aircraft departing on DRK VORTAC R-305 continue climbing on course. All other aircraft climbing right turn direct DRK VORTAC then on assigned course.

PRESCOTT THREE DEPARTURE (OBSTACLE)

PRESCOTT, ARIZONA

SW-4, 07 SEP 2023 to 05 OCT 2023

SW-4, 07 SEP 2023 to 05 OCT 2023