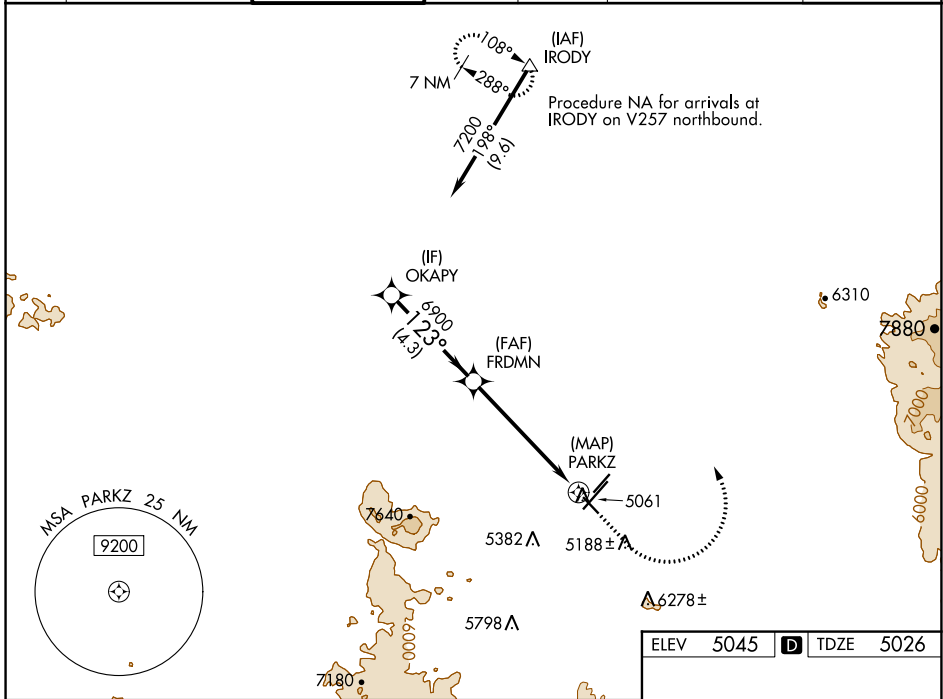


| | | | |
|--|------------------------|-----------------------------|---|
| WAAS CH 49235 W12A | APP CRS 123° | Rwy Idg TDZE Apt Elev | 4258 5026 5045 |
|--|------------------------|-----------------------------|---|

RNAV (GPS) RWY 12

PRESCOTT RGNL-ERNEST A LOVE FLD (PRC)

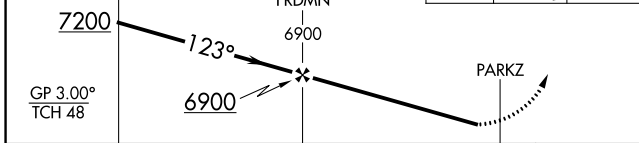
| | | | | | |
|---|--|---|-------------------------|---|--|
| RNP APCH. | | | | MISSED APPROACH: Climb to 5500 then climbing left turn to 9000 direct IRODY and hold, continue climb-in-hold to 9000. | |
| ⚠ For uncompensated Baro-VNAV systems, LNAV/VNAV NA below -11°C or above 49°C. Rwy 12 helicopter visibility reduction below 1 SM NA. Straight-in Rwy 12 NA at night, Circling Rwy 12, 3L, 30 NA at night. | | | | | |
| ATIS 127.2 | PHOENIX APP CON 133.575 281.55 | PRESCOTT TOWER ✳ 125.3 (CTAF) 257.9 | GND CON 121.7 | CLNC DEL 119.25 | 128.75 (12-30) 125.3 (CTAF) (3R-21L) UNICOM 122.95 |



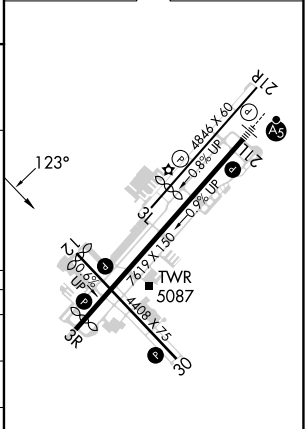
SW-4, 07 SEP 2023 to 05 OCT 2023

VGSI and RNAV glidepath not coincident (VGSI Angle 4.24/TCH 52).

| | | |
|-------|-------|-----------|
| OKAPY | FRDMN | IRODY |
| 7200 | 6900 | 5500 9000 |



| | |
|-----------|-----------|
| ELEV 5045 | TDZE 5026 |
|-----------|-----------|



| CATEGORY | A | B | C | D |
|--------------|-----------------------|-----------------------|-------------------------|-------------------------|
| LPV DA | 5276-1 | | 250 (300-1) | |
| LNAV/VNAV DA | 5432-1 3/8 | | 406 (400-1 3/8) | |
| LNAV MDA | 5520-1 | 494 (500-1) | 5520-1 3/8 | 494 (500-1 3/8) |
| CIRCLING | 5520-1 475 (500-1) | 5760-1 715 (800-1) | 6080-3 1035 (1100-3) | 6680-3 1635 (1700-3) |

MIRL Rwy 3L-21R and 3R-21L
MIRL Rwy 12-30
REIL Rwy 3R, 12, and 30